



Anhui Zhongke Duling Commercial Appliance Co.,Ltd

NO.1,HEXIANGHU ROAD,SHUANGFENG ECONOMIC DEVELOPMENT ZONE,HEFEI,ANHUI

Tel:+86-551-66775195

Fax:+86-551-67745193

Wab:www.biometer.com www.zkduling.en.alibaba.com

E-mail:info@zkduling.com



M

ETHER

2019 New Series

METHER & PROMED

SCIENCE & BIOMEDICAL



Anhui Zhongke Duling Commercial Appliance Co.,Ltd

COMPANY PROFILE



Anhui Zhongke Duling Commercial Appliance Co.ltd is a high-tech enterprise which specialized in designing, manufacturing and marketing of laboratory & medical refrigerators and freezers, such as pharmacy refrigerators, ultra low temperature freezers, deep freezers, cold room, customized commercial freezers and cold chain equipment .

We pursue the concept of "For a healthy world, For a healthy future" with the strong technical support from R&D team. We produce environmentally friendly products for high-end brand technical areas like research institutes, hospitals, laboratories, commercial retails with the dedication to build a green bridge for health of the humanity and the world.

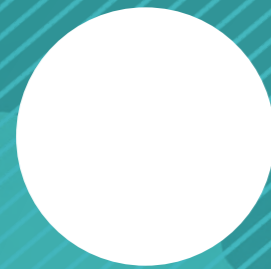
We had obtained the national & international certification of ISO13485, ISO9001, ISO14001, strike forward to the international first-class enterprise with the quality management goal of orderly, continuous improvement and controllable risk.

Operating honestly, focusing on quality and complying with the law is our basic principle. We aim to serve for the society and for a better environment with producing environmentally products and offering best customer service.

CERTIFICATE OF HONOR



FOR A HEALTHY WORLD
FOR A HEALTHY FUTURE



DEVELOPMENT HISTORY



2011.10 Established in Hefei, Anhui Province

- Successfully designed ULT freezer of single cascade system, obtained 7 national invention patents.
- Explore the international market and obtain CE certificate.
- Finish the registration of high-end brand-METHER, the 2nd generation of VIP ULT freezers with energy conservation and environmental protection, had been successfully developed.

- Access to the national medical equipment production license.
- Access to the national medical equipment registration certificate.
- Access through ISO13485, ISO9001 certification.

2012



2015



- Invent the world's first double system cooling system.
- Win the title of intellectual property demonstration enterprise of Anhui Province.
- Obtain OHSAS18001 certification.
- Obtain 4 copyrights patents, 5 appearance patents of medical freezer.

2017



2014



- Cover 31 provinces, cities and autonomous regions with all series products.
- Update design of ultra-low temperature freezer, pharmacy refrigerator, blood bank refrigerator and deep freezer.
- Access to the national high-tech enterprise.

2016



2018



- Move to new site, over 25000m² produce area with 4 production lines.
- Signed 20 domestic exclusive distributors, more than 200 dealers to promote our products.
- Guard with whole solution of lab & health area to serve the end users.
- Revenue exceeded 14 million dollars.

- Design the ultra-low temperature freezer with double cascade cooling system.
- More than 70 products are released with the sales areas covered 22 provinces, cities and autonomous regions.
- Access the environmental management system certification of ISO14001.

- Obtain 9 copyright patents, 3 utility model patents, 3 appearance patents of medical freezers.
- Become the executive director unit of medical logistics, branch of China federation of logistics and purchasing.
- Set up overseas R&D center successfully, extend overseas market.

METHERBRAND

“Safety, Profession, Environmental Protection”

In order to meet the needs of the international and domestic market, relying on specialized technical R&D and production team, we have introduced advanced refrigeration technology from Europe to build high-end medical research equipment in China. METHER brand not only adhering the principle of the company's management of “For a healthy world, For a healthy future”, but also effectively interpret the company's innovation concept to meet the increasingly diversified needs from domestic and abroad. With the introduction of western advanced technology and constantly innovation of R&D team, we had obtained the world's unique double cooling system and double cascade system technology of ultra-low temperature freezer and applied multiple national invention patents in 2017.

PROMEDBRAND

“Value, Stability , Energy Saving”

We are committing to implement the strategic objectives of “Build the world-famous brand, cast the decades enterprise” since the establishment of PROMED. We constantly released new products with the demand of market, developed multiple energy saving ultra-low temperature freezers which widely used in laboratory of colleges, and industry of medical, electronic, chemical, military along with the agriculture, forestry, animal husbandry and fishery. Mix refrigeration technology would save energy by 50%, two cascade system technology would be more environmental, humanized design would be more realistic, professional after-sale service would be more considerate.



BRANDS STORY



CONTENTS

ULT FREEZER

- METHER-86°C Dual System-----8
- METHER-86°C Cascade System-----13
- PROMEED-86°C Self-Cascade System-----18
- PROMEED-86°C Cascade System-----25
- Biological Sample Banks Require Consumables-----30

BIOMEDICAL FREEZER

- 40°C Medical Freezer-----34
- 25°C Medical Freezer-----42

BLOOD BANK REFRIGERATOR

- 4°C Blood Bank Refrigerator-----46

PHARMACY REFRIGERATOR

- METHER 2~8°C Pharmacy Refrigerator-----50
- PROMED 2~8°C Pharmacy Refrigerator-----54

MOBILE COOLER

- METHER -25°C~30°C Mobile Cooler-----60

BLOOD PLATELET INCUBATOR

- Blood Platelet Incubator-----64

MODELS LINE-UP

- Models Line-Up-----68

METHHER SERIES

-86 °C Dual System



This product is specially designed and manufactured for long term storage of various biological product, including viruses, germs, erythrocytes, leucocyte and cutis. Applications can be found in blood banks, hospitals, epidemic prevention services, and research institutes, laboratories in electronic and chemical plants, bio-logical engineering institutes and marine fishery companies.



2 individual inner doors can be opened independently to minimize frost buildup inside the chamber
 Unique door seal design for the minimum loss of cold temperature during a door opening
 Stainless Steel handle to ensure the door open conveniently even in the case of frost



Excellent Doors Seals
 5 gasket seal, 4 seals for out door



7 Inches touch Screen
 All data display on the screen, easy to observe

Write Board for short records which would pass to next user

Green Handle, easy to use with 2 locks

Special V.I.P (Vacuum Insulation Panel) design with extra insulation factor cuts down heat loss to cabinet by 25%



Big condenser for better heat dissipation



Changeable sensor box or you could put another sensor from here to monitor or record temperature



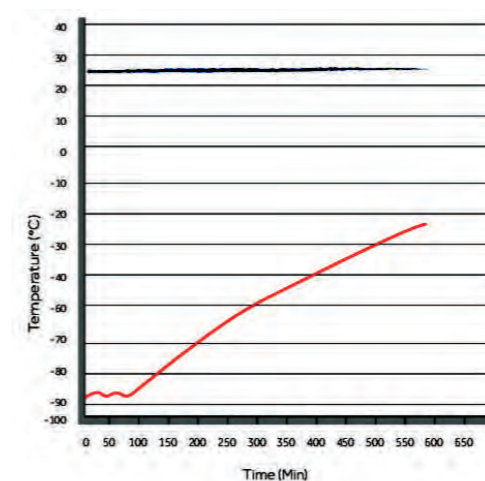
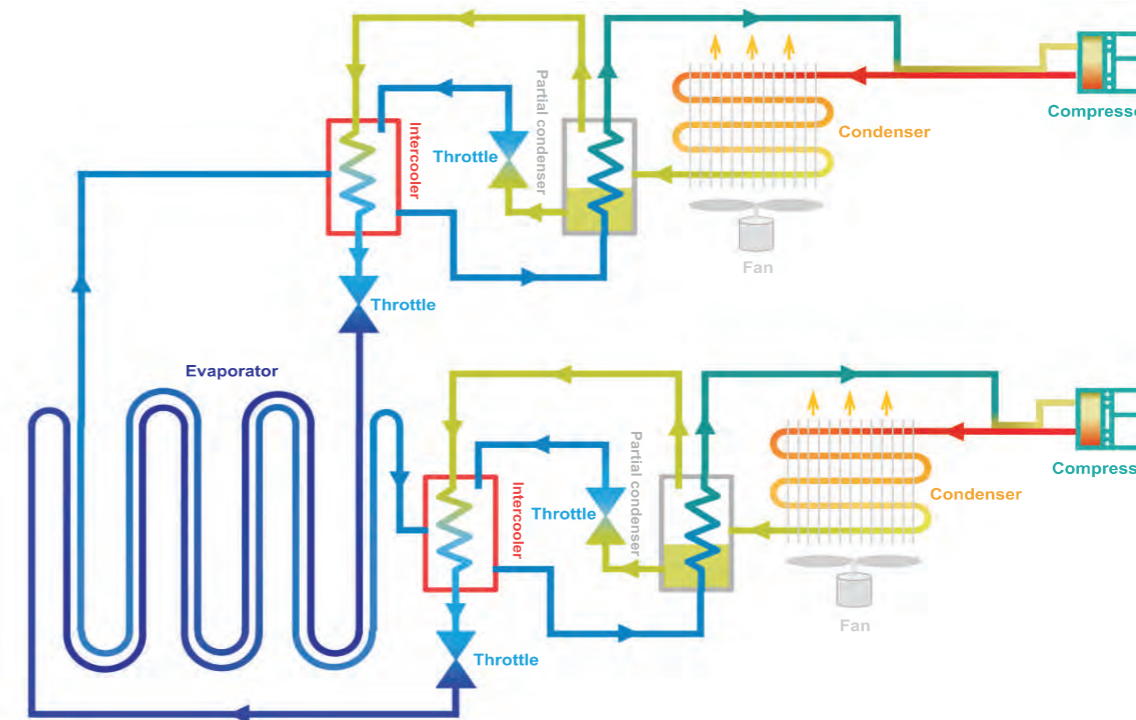
-86 °C Methers Dual System --7 Inches Touch Screen & Functions



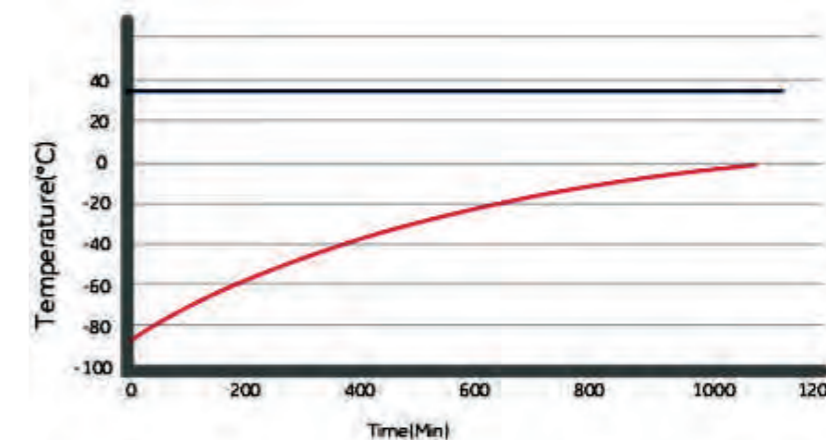
Alarm	Alarm Triggering Condition
High Temperature	Temperature reaches the warm alarm limit
Low Temperature	Temperature reaches the low alarm limit
Power Failure	Equipment loses power
Door Ajar	Door open period exceeds 5 mins
Probe Failure	<ol style="list-style-type: none"> 1. Main cabinet temperature control sensor fails 2. Condenser sensor fails 3. Ambient sensor fails 4. Heat exchanger sensor fails 5. Heat exchanger temperature fails
Low Battery	Battery capacity runs low or battery switch is not turned on
Hot Condenser	<ol style="list-style-type: none"> 1. Condensers filter element is clogged 2. Ambient temperature is too high
High Ambient Temperature	Ambient temperature exceeds 32°C
Other alarms	<ol style="list-style-type: none"> 1. Thermostat failure 2. Abnorml voltage alarm



Dual System Circulation System



Pull-up test at 25°C ambient
MDF-86V588D



Pull-up test at 32°C ambient
MDF-86V588D

METHER -86°C Dual System

-86 °C Mether Dual System

METHER SERIES

-86°C Cascade System

FILED PROVEN RELIABILITY

- Unique insulated inner door design for four separate storage compartments to minimize frost buildup inside the chamber.
- Specialized control system design for a well-balanced operation of dual refrigeration system.
- Positive filed proven reliability record.

SAFETY

- Malfunction alarms including high and low temperature, power failure, sensor error, clean-filter, and extremely high ambient, abnormal voltage, thermostat failure, low battery, condenser clean, door ajar.
- Capable of producing two types of alarm outputs, audible buzzer and visible flashing light.
- Door open feature standard and USB port for temperature data downloading standard on upright models.
- Remote alarm contacts.



ENERGY SAVING

- Unique door seal design for the minimum loss of cold temperature during a door opening.
- High performance VIP insulation panels to minimize cabinet heat gain and to improve temperature stability.

INSTALLATION AND APPLICATION

- Wide range operating voltage system from 187V to 242V designed to allow units installed in areas with poor voltage condition
- Suitable for 10°C to 32°C ambient temperature

KEY DESIGN FEATURES

- Microprocessor-controlled system designed for controlled range of -40°C to -86°C for cabinet space with 1°C increment
- Settable high temperature and low temperature alarms.
- Automatic clean-filter alarm and sensor error alert.
- Adjustable storage shelf height
- Optional temperature recorder, storage racks and storage box
- Double security with two independent cooling system, when one system breakdown, the other system could maintain the inner temperature at -70°C.



MDF-86V728



MDF-86V408



MDF-86V838



MDF-86V588



MDF-86V838D

MDF-86V588D

MDF-86V408DL

METHER -86°C Cascade System



-86 °C Methers Cascade System

FILED PROVEN RELIABILITY

- Unique insulated inner door design for four separate storage compartments to minimize frost buildup inside the chamber.
- Specialized control system design for a well-balanced operation of cascade refrigeration system.
- Positive filed proven reliability record.

ENERGY SAVING

- Unique door seal design for the minimum loss of cold temperature during a door opening.
- High performance VIP insulation panels to minimize cabinet heat gain and to improve temperature stability.
- HC Refrigerant with better efficiency & less energy cost, good for environment.

SAFETY

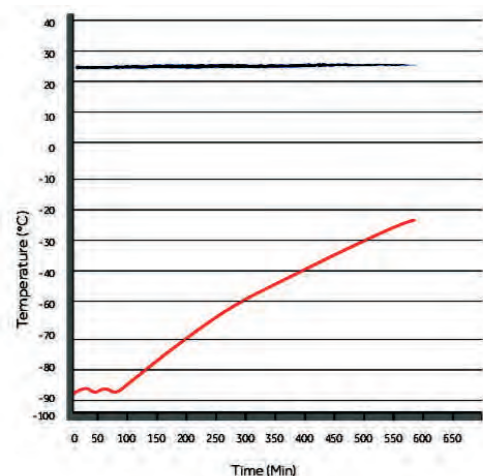
- Malfunction alarms including high and low temperature, power failure, sensor error, clean-filter, and extremely high ambient, abnormal voltage, thermostat failure, low battery, condenser clean, door ajar.
- Capable of producing two types of alarm outputs, audible buzzer and visible flashing light.
- Door open feature standard and USB port for temperature data downloading standard on upright models.
- Remote alarm contacts.

KEY DESIGN FEATURES

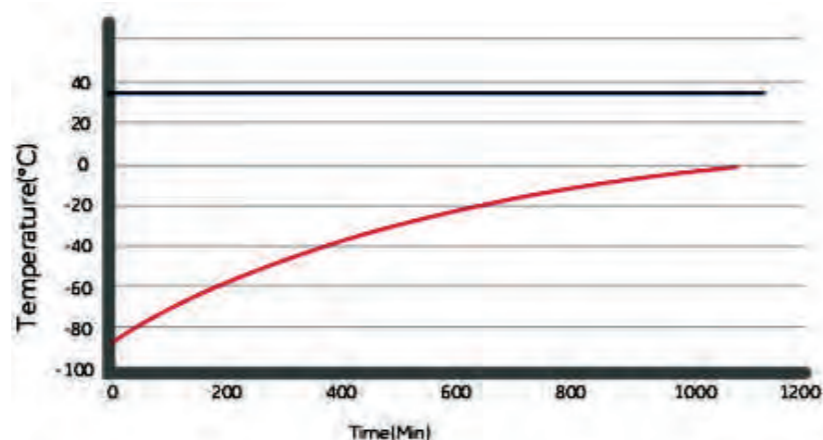
- Microprocessor-controlled system designed for controlled range of -40°C to -86°C for cabinet space with 1°C increment
- Settable high temperature and low temperature alarms.
- Automatic clean-filter alarm and sensor error alert.
- Adjustable storage shelf height
- Optional temperature recorder, storage racks and storage box

INSTALLATION AND APPLICATION

- Wide range operating voltage system from 187V to 242V designed to allow units installed in areas with poor voltage condition
- Suitable for 10°C to 32°C ambient temperature

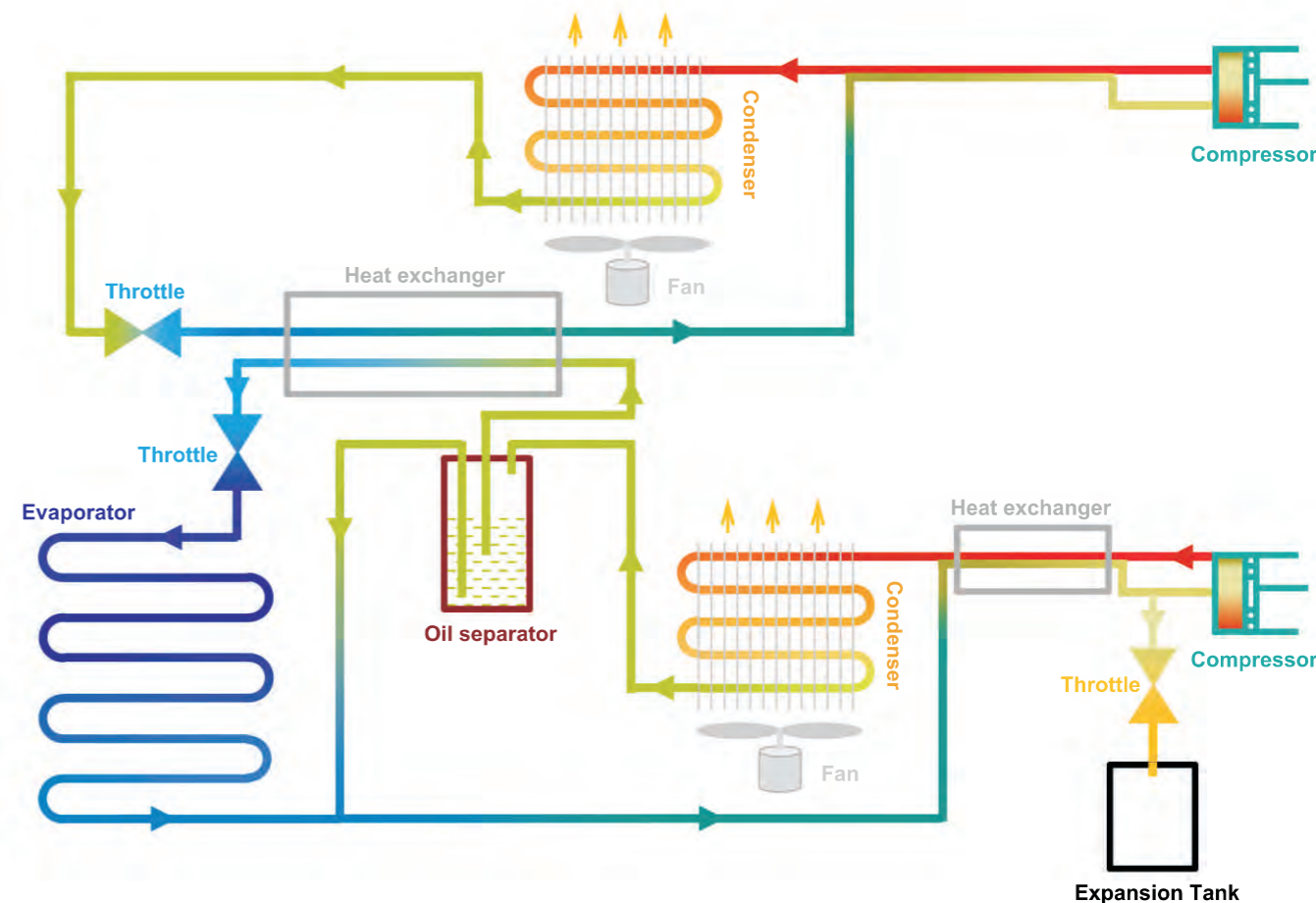


Pull-up test at 25°C ambient
MDF-86V728



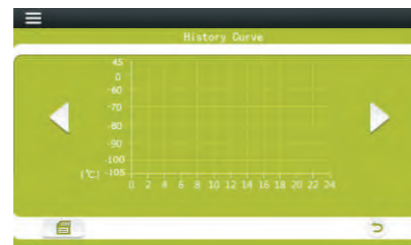
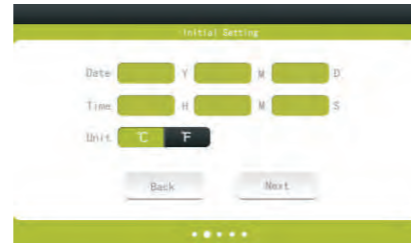
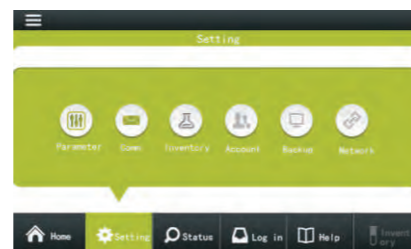
Pull-up test at 32°C ambient
MDF-86V728

Cascade System Heat Exchange Circulation



METHER -86°C Cascade System

-86 °C Methers Cascade System --7 Inches Touch Screen & Functions



Alarm	Alarm Triggering Condition
High Temperature	Temperature reaches the warm alarm limit
Low Temperature	Temperature reaches the low alarm limit
Power Failure	Equipment loses power
Door Ajar	Door open period exceeds 5 mins
Probe Failure	<ol style="list-style-type: none"> 1. Main cabinet temperature control sensor fails 2. Condenser sensor fails 3. Ambient sensor fails 4. Heat exchanger sensor fails 5. Heat exchanger temperature fails
Low Battery	Battery capacity runs low or battery switch is not turned on
Hot Condenser	<ol style="list-style-type: none"> 1. Condensers filter element is clogged 2. Ambient temperature is too high
High Ambient Temperature	Ambient temperature exceeds 32°C
Other alarms	<ol style="list-style-type: none"> 1. Thermostat failure 2. Abnorml voltage alarm



PROMED SERIES

-86 °C Self- Cascade System



MDF-86V838E



MDF-86V588E



MDF-86V340E



MDF-86V188E



SAFETY

- Malfunction alarms including high and low temperature, power failure, sensor error, clean-filter, and extremely high ambient, abnormal voltage, thermostat failure, low battery, condenser clean, door ajar.
- Capable of producing two types of alarm outputs, audible buzzer and visible flashing light.
- Door open feature standard and USB port for temperature data downloading standard on upright models.
- Remote alarm contacts.



INSTALLATION AND APPLICATION

- Wide range operating voltage system from 187V to 242V designed to allow units installed in areas with poor voltage condition
- Suitable for 10°C to 32°C ambient temperature



FILED PROVEN RELIABILITY

- Unique insulated inner door design for four separate storage compartments to minimize frost buildup inside the chamber.
- Specialized control system design for a well-balanced operation of cascade refrigeration system.
- Positive filed proven reliability record.



KEY DESIGN FEATURES

- Microprocessor-controlled system designed for controlled range of -40°C to -86°C for cabinet space with 1°C increment
- Settable high temperature and low temperature alarms.
- Automatic clean-filter alarm and sensor error alert.
- Adjustable storage shelf height
- Optional temperature recorder, storage racks and storage box



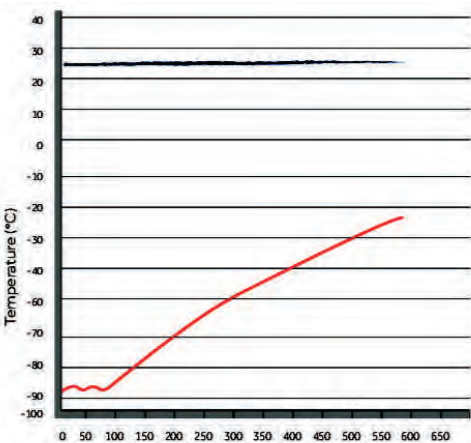
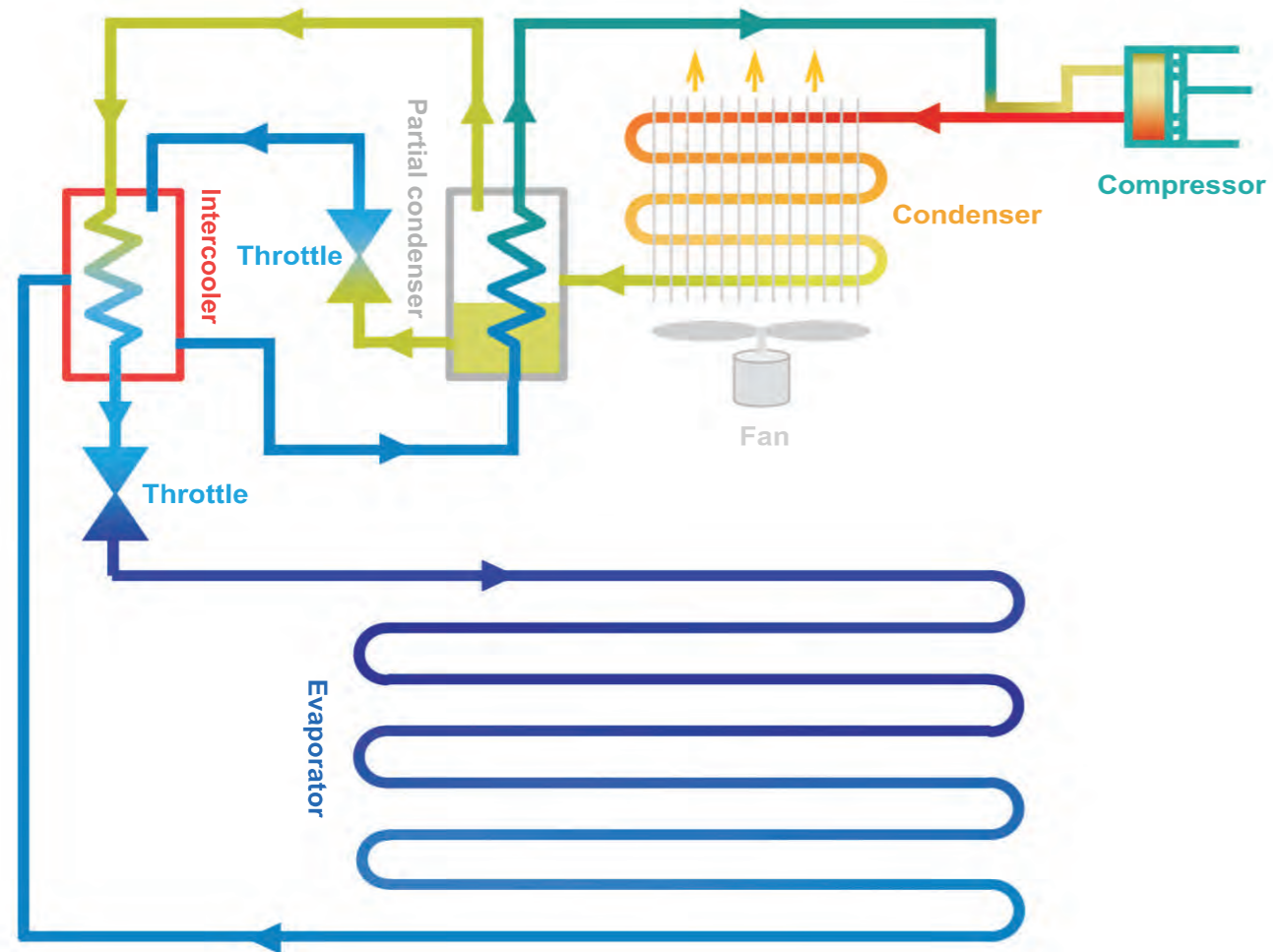
ENERGY SAVING

- Unique door seal design for the minimum loss of cold temperature during a door opening.
- High performance VIP insulation panels to minimize cabinet heat gain and to improve temperature stability.

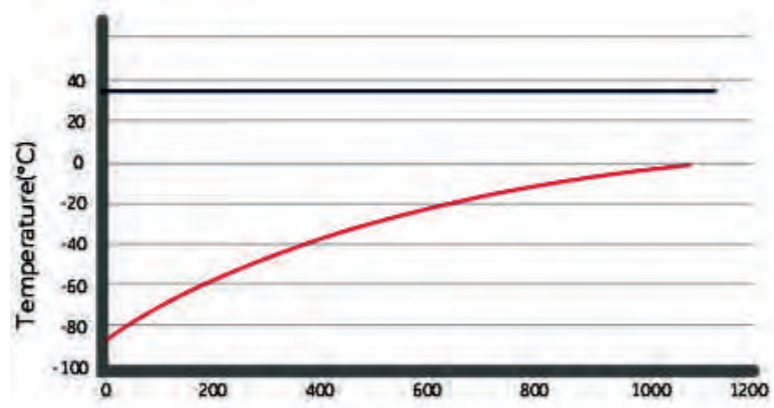


This product is specially designed and manufactured for long term storage of various biological product, including viruses, germs, erythrocytes, leucocytes and cutis. Applications can be found in blood banks, hospitals, epidemic prevention services, and research institutes, laboratories in electronic and chemical plants, bio-logical engineering institutes and marine fishery companies.

-86 °C Self- Cascade System



Pull-up test at 25°C ambient



Pull-up test at 32°C ambient

-86 °C Self- Cascade System



3 individual inner doors can be opened independently to minimize frost buildup inside the chamber. Unique door seal design for the minimum loss of cold temperature during a door opening. Stainless Steel inner handle to ensure the door open conveniently even in the case of frost.



Excellent Doors Seals 5 gasket seal, 4 seals for out door, 1 seal for inner door which provides maximum protection against thermal intrusion

Big Door handle, easy to open



Sample port on back for temperature monitoring conveniently



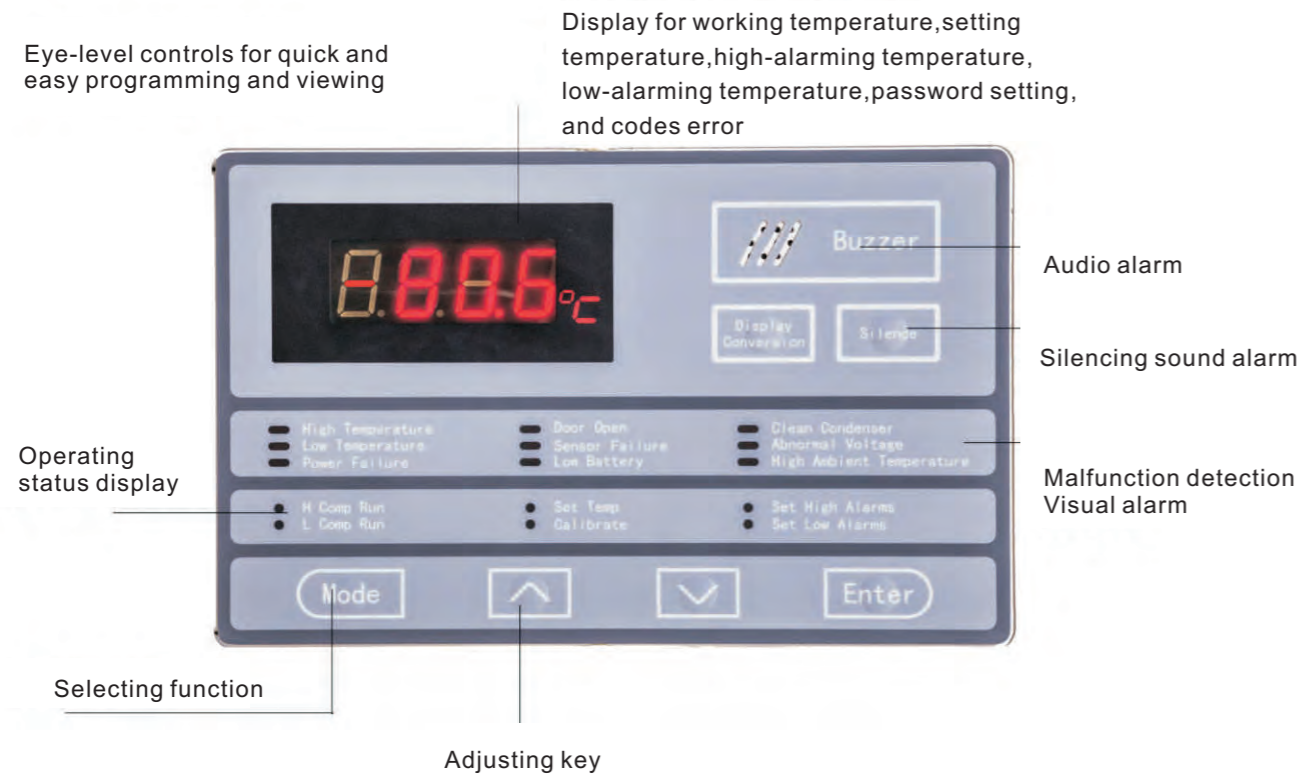
Big condenser for better heat dissipation, Ambient Temperature sensor



Controller Panel with press button Alarm status shows on it, easy for attention



-86 °C Self- Cascade System



Alarm	Alarm Triggering Condition
High Temperature	Temperature reaches the warm alarm limit
Low Temperature	Temperature reaches the low alarm limit
Power Failure	Equipment loses power
Door Ajar	Door open period exceeds 5 mins
Probe Failure	<ol style="list-style-type: none"> 1. Main cabinet temperature control sensor fails 2. Condenser sensor fails 3. Ambient sensor fails 4. Heat exchanger sensor fails 5. Heat exchanger temperature fails
Low Battery	Battery capacity runs low or battery switch is not turned on
Hot Condenser	<ol style="list-style-type: none"> 1. Condensers filter element is clogged 2. Ambient temperature is too high
High Ambient Temperature	Ambient temperature exceeds 32°C
Other alarms	<ol style="list-style-type: none"> 1. Thermostat failure 2. Abnorml voltage alarm

-86 °C Self- Cascade System



CHARACTERISTIC FUNCTION

- Safety door lock design to prevent abnormal door open
- Wide voltage for AC187V-AC242V
- Mute design for salient needed environment
- Digital display with big screen, easy to check
- Excellent thermal insulation peormance with silicone door seal design (second door seal optional)
- Mobile and fixable wheel for move

BOX

- The box is made of high quality cold rolled steel plate, and the surface is treated with advance anti-corrosion phosphatic spraying process with elegant orange powder coating. High-class 304 SUS inner box, durable and reliable.

SAFETY GUARANTEE

- Temperature high/low alarm, sensor malfunction alarm, thermostat failure alarm
- Audible and visible alarm
- Keyboard lockable, password protection o pe change running parameter randomly
- Display running parameter with real-time monioring to guarantee the stability of freezer

TEMPERATURE CONTROL MODE

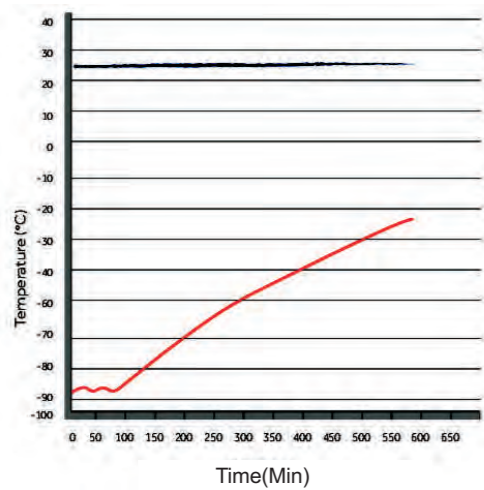
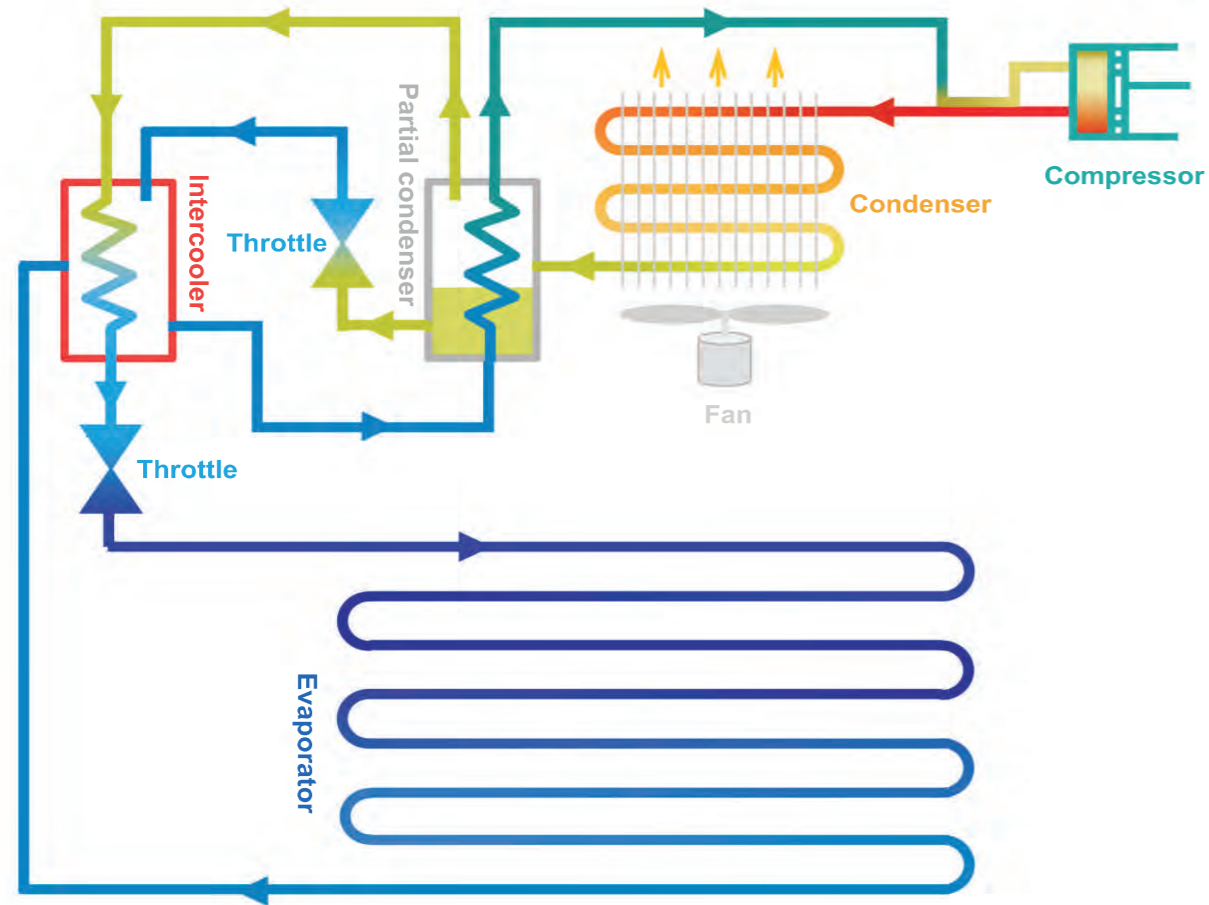
- With the international famous brand computer temperature control system to keep the inner temperature accurate and stable. Temperature adjusted from -40°C~-86°C
- High light digital display
- High/low temperature alarm, the alarm temperature can be set as needed
- Platinum esiance temperature sensor, sensing temperature accurately

REFRIGERATION SYSTEM

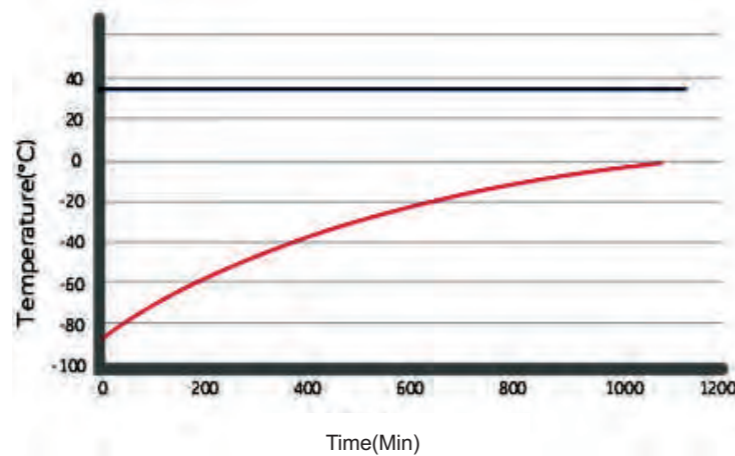
- Imported brand compressor work with CFC-Free environmental refrigerant
- High density insulation foam layer with better heat preservation effect
- Optimized self-cascade refrigeration system to provide faster cooling speed with lower power consumption



-86 °C Self- Cascade System



Pull-up test at 25°C ambient



Pull-up test at 32°C ambient

PROMED SERIES

-86 °C Cascade System



PROMED -86 °C Cascade System

This product is specially designed and manufactured for long term storage of various biological product, including viruses, germs, erythrocytes, leucocytes and cutis. Applications can be found in blood banks, hospitals, epidemic prevention services, and research institutes, laboratories in electronic and chemical plants, bio-logical engineering institutes and marine fishery companies.

-86 °C Cascade System



MDF-86V688

MDF-86V340II



ENERGY SAVING

- Unique door seal design for the minimum loss of cold temperature during a door opening.
- High performance VIP insulation panels to minimize cabinet heat gain and to improve temperature stability.



CHARACTERISTIC FUNCTION

- Removable condenser covers for easy-maintain and clean
- Reserved position and port for chart recorder
- Protection cover for switch and external alarm port
- Door lock design to avoid abnormal door open
- Easy-removable inner door
- Adjustable SUS shelves
- Professional double testing hole
- Adjustable wheel, easy for installation, move and fix
- Frozen store rack optional



FILED PROVEN RELIABILITY

- Unique insulated inner door design for four separate storage compartments to minimize frost buildup inside the chamber.
- Specialized control system design for a well-balanced operation of cascade refrigeration system.
- Positive filed proven reliability record.



SAFETY

- Malfunction alarms including high and low temperature, power failure, sensor error, clean-filter, and extremely high ambient, abnormal voltage, thermostat failure, low battery, condenser clean, door ajar.
- Capable of producing two types of alarm outputs, audible buzzer and visible flashing light.
- Door open feature standard and USB port for temperature data downloading standard on upright models.
- Remote alarm contacts.



INSTALLATION AND APPLICATION

- Wide range operating voltage system from 187V to 242V designed to allow units installed in areas with poor voltage condition
- Suitable for 10°C to 32°C ambient temperature



-86 °C Cascade System



3 individual inner doors can be opened independently to minimize frost buildup inside the chamber. Unique door seal design for the minimum loss of cold temperature during a door opening. Stainless Steel inner handle to ensure the door open conveniently even in the case of frost.



Excellent Doors Seals 5 gasket seal, 4 seals for out door, 1 seal for inner door which provides maximum protection against thermal intrusion

Big Door handle, easy to open



Sample port on back for temperature monitoring conveniently



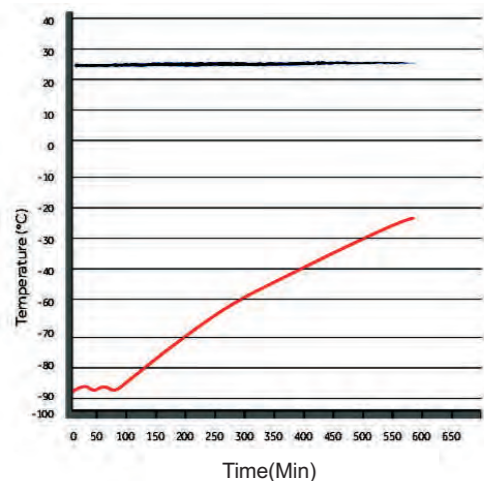
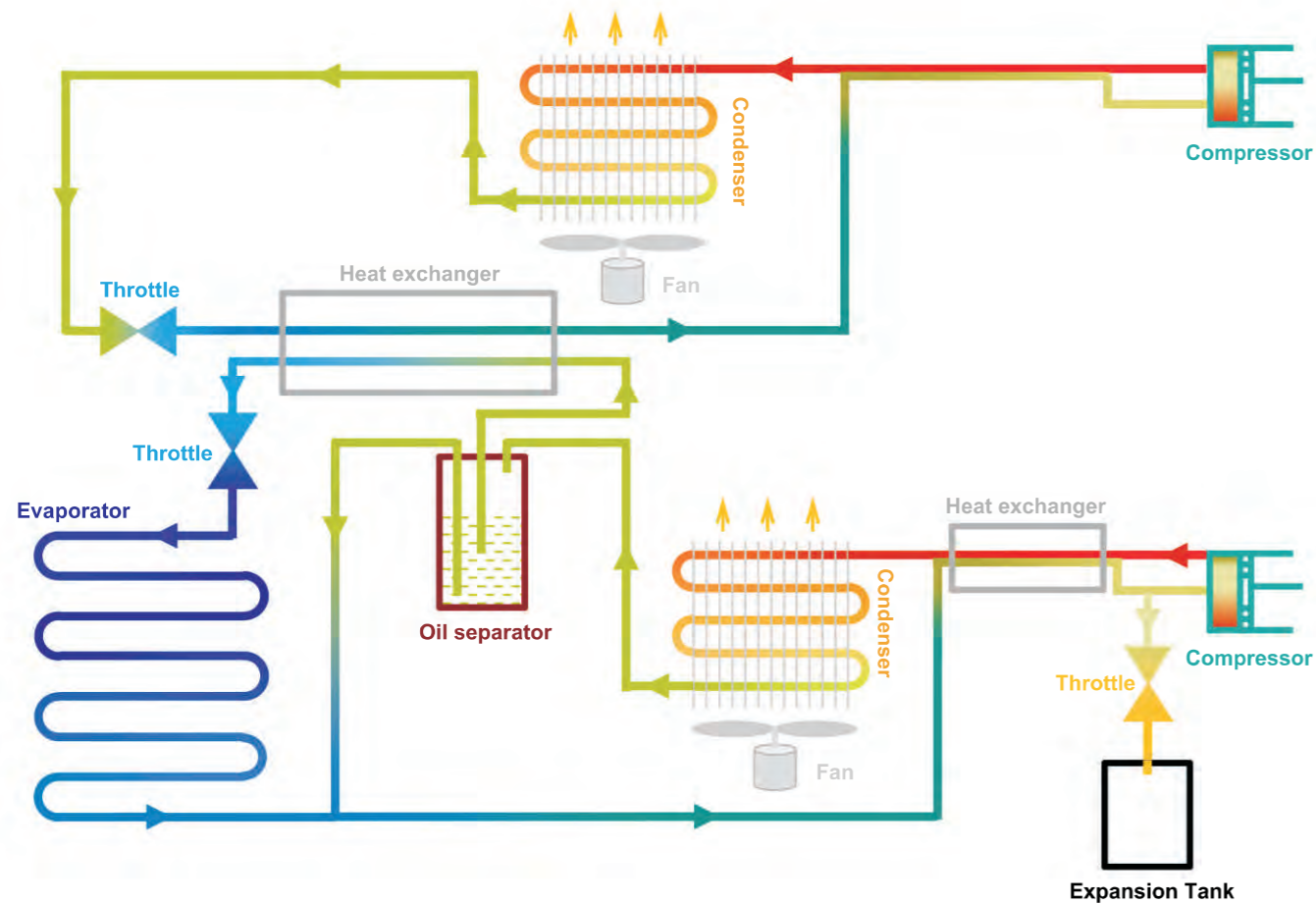
Big condenser for better heat dissipation, Ambient Temperature sensor



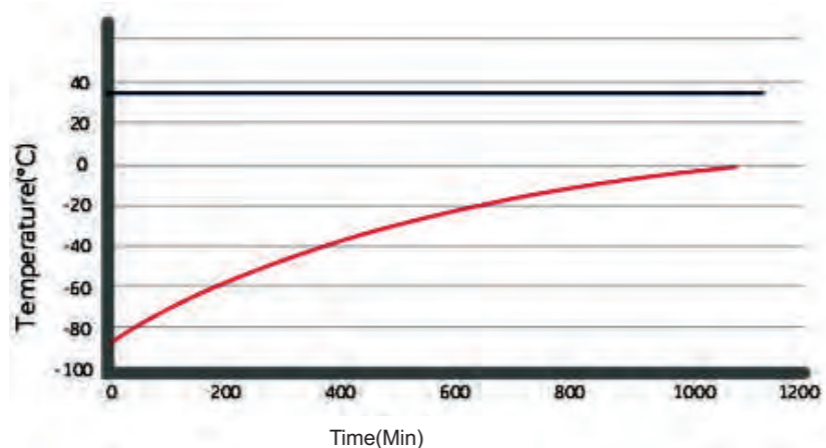
Controller Panel with press button Alarm status shows on it, easy for attention



-86 °C Cascade System Cascade System Heat Exchange Circulation



Pull-up test at 25°C ambient

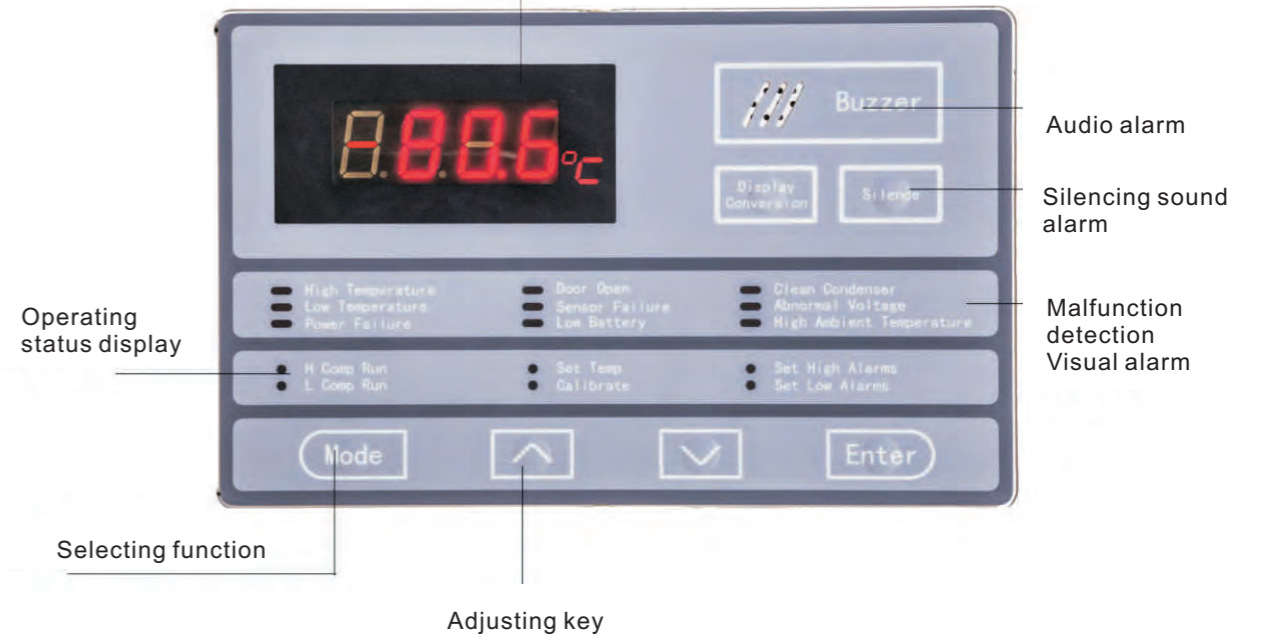


Pull-up test at 32°C ambient

-86 °C Cascade System

Eye-level controls for quick and easy programming and viewing

Display for working temperature, setting temperature, high-alarming temperature, low-alarming temperature, password setting, and codes error



Alarm	Alarm Triggering Condition
High Temperature	Temperature reaches the warm alarm limit
Low Temperature	Temperature reaches the low alarm limit
Power Failure	Equipment loses power
Door Ajar	Door open period exceeds 5 mins
Probe Failure	<ol style="list-style-type: none"> 1. Main cabinet temperature control sensor fails 2. Condenser sensor fails 3. Ambient sensor fails 4. Heat exchanger sensor fails 5. Heat exchanger temperature fails
Low Battery	Battery capacity runs low or battery switch is not turned on
Hot Condenser	<ol style="list-style-type: none"> 1. Condensers filter element is clogged 2. Ambient temperature is too high
High Ambient Temperature	Ambient temperature exceeds 32°C
Other alarms	<ol style="list-style-type: none"> 1. Thermostat failure 2. Abnorml voltage alarm

1. Medical ULT Freezer

MDF-86V838D

Temperature Range
-40°C ~ -86°C
 Capacity
838L



MDF-86V588D

Temperature Range
-40°C ~ -86°C
 Capacity
588L



Model	Volume	Exterior dimensions (W*D*H/mm)	Interior dimensions (W*D*H/mm)	Net Weight/kg	Power/W	Temp Range/°C	Compressor/NO.	Optional accessory
MDF-86V838D	838L	1160*1085*1994.5	894*718*1310	275kg	1475W	-40°C~-86°C	Secop/2	Data logger, CO2\ LN2 back up system
MDF-86V588D	588L	872*1100*1994.5	606*738*1310	249kg	1250W	-40°C~-86°C	Secop/2	Data logger, CO2\ LN2 back up system

2. CONSUMABLES FOR ULT FREEZER



Two code management system to locate and monitor vials

Label Printer

Batch code recognition machine

Multiple Color for multiple choice

PPT BOX

304SUS Racks

3. BIOLOGICAL SAMPLE BANKS REQUIRE CONSUMABLES

Freezer Brand	Freezer Model	Capacity(L)	Shelves	Comparments	Size of Racks(H* D)	Racks per Shelf	Racks per Freezer	Boxes Per Rack	Boxes per Freezer	Box Size(mm)	Vials per Freezer	
METHER	MDF-86V408	408	3	4	5*4	4	16	20	288	2*50	28800	
	MDF-86V408DL				4*4	4		16				
	MDF-86V588	588	3	4	5*5	4	16	25	400			
	MDF-86V588D							25				400
	MDF-86V728	728	3	4	5*4+6*4	6	24	20+24	504			50400
	MDF-86V838	838	3	4	5*5	6	24	25	600			60000
MDF-86V838D	25							600				
PROMED	MDF-86V188E	188	3	4	4*3	3	12	12	108	10800		
	MDF-86V340E	340	3	4	4*4	3	12	16	192	19200		
	MDF-86V408E	408	3	4	5*4	4	16	20	288	28000		
					4*4	4		16				
	MDF-86V588E	588	3	4	5*5	4	16	25	400	40000		
	MDF-86V838E	838	3	4	5*5	6	24	25	600	60000		
	MDF-86V936	936	3	4	5*5	6	24	25	600	60000		
	MDF-86V340II	340	3	4	4*4	3	12	16	192	19200		
	MDF-86V688	688	3	4	4*4	6	24	16	384	38400		
	MDF-86H105	105	/	1	11*1+6*1	/	4	11+6	34	3400		
MDF-86H485	485	/	1	11*1+6*1	/	30	11+6	300	30000			

-86 °C ULT Freezer



	Model	MDF-86V50	MDF-86V188E	MDF-86V340E	MDF-86V408E	MDF-86V588E	MDF-86V838E	MDF-86V936	MDF-86V338	MDF-86V340		MDF-86V408	MDF-86V588	MDF-86V688	MDF-86V728	MDF-86V838	MDF-86V408D	MDF-86V588D	MDF-86V838D	MDF-86H105	MDF-86H485	
Specifications	Shelf/drawer QTY	Stainless steel shelf/1	Stainless steel shelf/2	Stainless steel shelf/3	Stainless steel shelf/3	Stainless steel shelf/3	Stainless steel shelf/3	Stainless steel shelf/3	Stainless steel shelf/3	Stainless steel shelf/3		Stainless steel shelf/3	Stainless steel shelf/3	Stainless steel shelf/3	Stainless steel shelf/3	Stainless steel shelf/3	Stainless steel shelf/3	Stainless steel shelf/3	Stainless steel shelf/3	/	/	
	Cooling	Direct cooling	Direct cooling	Direct cooling	Direct cooling	Direct cooling	Direct cooling	Direct cooling	Direct cooling	Direct cooling		Direct cooling	Direct cooling	Direct cooling	Direct cooling	Direct cooling	Direct cooling	Direct cooling	Direct cooling	Direct cooling	Direct cooling	Direct cooling
	Defrost	Manual	Manual	Manual	Manual	Manual	Manual	Manual	Manual	Manual		Manual	Manual	Manual	Manual	Manual	Manual	Manual	Manual	Manual	Manual	Manual
	Refrigerant	Mixed-gas	Mixed-gas	Mixed-gas	Mixed-gas	Mixed-gas	Mixed-gas	Mixed-gas	Mixed-gas	HC	R508 & R404		HC	HC	R508 & R404	HC	HC	Mixed-gas	Mixed-gas	Mixed-gas	Mixed-gas	Mixed-gas
	Power Consumption(kWh/24h)	6.5	8.2	11.2	11	12.5	24	14.5	12.8	20		11.6	12	20	15.4	13.86	11	15.5	24	3.8	11.5	
	Noise (db)	49.5	55	55	50	50	55	53	50	50		55	55	55	53	55	53	50	55	50	50	54.5
Cooling system	Ambient temperature (°C)	10~32°C	10~32°C	10~32°C	10~32°C	10~32°C	10~32°C	10~32°C	10~32°C	10~32°C		10~32°C	10~32°C	10~32°C	10~32°C	10~32°C	10~32°C	10~35°C	10~32°C	10~32°C	10~32°C	10~32°C
	Temperature range (°C)	-40~-86°C	-40~-86°C	-40~-86°C	-40~-86°C	-40~-86°C	-40~-86°C	-40~-86°C	-60~-86°C	-60~-86°C		-60~-86°C	-60~-86°C	-60~-86°C	-60~-86°C	-60~-86°C	-40~-86°C	-40~-86°C	-40~-86°C	-40~-86°C	-40~-86°C	-40~-86°C
	Compressor brand/QTY	SECOP/1	CUBIGEL/1	SECOP/1	Secop/1	Secop/2	Secop/2	SECOP/2	SECOP/2	SECOP/2		SECOP/2	SECOP/2	SECOP/2	SECOP/2	SECOP/2	SECOP/2	SECOP/2	SECOP/2	SECOP/2	SECOP/2	SECOP/2
	Sensor	PTC	PTC	PTC	PTC	PTC	PTC	PTC	PTC	PTC		PTC	PTC	PTC	PTC	PTC	PTC	PTC	PTC	PTC	PTC	PTC
	Temperature controller	Microprocessor	Microprocessor	Microprocessor	Microprocessor	Microprocessor	Microprocessor	Microprocessor	Microprocessor	Microprocessor		Microprocessor	Microprocessor	Microprocessor	Microprocessor	Microprocessor	Microprocessor	Microprocessor	Microprocessor	Microprocessor	Microprocessor	Microprocessor
	Display	Digital display	Digital display	Digital display	Digital display	Digital display	Digital display	Digital display	Digital display	Digital display		LCD display	LCD display	LCD display	LCD display	LCD display	LCD display	LCD display	LCD display	LCD display	Digital display	Digital display
Power	Voltage/frequency (V/Hz)	220/50Hz	220/50Hz	220/50Hz	220/50Hz	220/50Hz	220/50Hz	220/50Hz	220/50Hz	220/50Hz		220/50Hz	220/50Hz	220/50Hz	220/50Hz	220/50Hz	220/50Hz	220/50Hz	220/50Hz	220/50Hz	220/50Hz	220/50Hz
	Power (W)	450W	610W	668W	725W	800W	840W	1600W	870W	1350W		845W	815W	808W	935W	890W	725W	800W	840W	455W	670W	
	Current (A)	3.1	3.3	3.5	5.7	6.9	6.5	5.8	6.75	5.8		7	7	7	7	7	5.7	6.9	6.5	2.2	3.57	
Material	Inside material	Stainless steel	Stainless steel	Stainless steel	Stainless steel	Stainless steel	Stainless steel	Stainless steel	Stainless steel	Stainless steel		Stainless steel	Stainless steel	Stainless steel	Stainless steel	Stainless steel	Stainless steel	Stainless steel	Stainless steel	Stainless steel	Stainless steel	
	Outside material	Color sprayed steel	Color sprayed steel	Color sprayed steel	Color sprayed steel	Color sprayed steel	Color sprayed steel	Color sprayed steel	Color sprayed steel	Color sprayed steel		Color sprayed steel	Color sprayed steel	Color sprayed steel	Color sprayed steel	Color sprayed steel	Color sprayed steel	Color sprayed steel	Color sprayed steel	Color sprayed steel	Color sprayed steel	
	Insulation	PURF	PURF	PURF	PURF	PURF	PURF	PURF	PURF	PURF		PURF	PURF	PURF	PURF	PURF	PURF	PURF	PURF	PURF	PURF	
Size	Capacity (L/cu.ft)	50\1.76	188\6.63	340\12	408\14.40	588\20.76	838\29.59	936\33.05	338\11.93	340\12		408\14.40	588\20.76	688\24.29	728\25.70	838\29.59	408	588	838	105\3.70	485\17.12	
	NT/GT. (kg)	75/95	145/180	175/205	215/245	249/275	275/305	310/330	190/220	190/220		215/245	249/275	260/290	320/350	275/305	215/245	249/275	275/305	42/45	130/150	
	Exterior size(W*D*H)(mm)	540×620×1115	830×810×1607.5	855×1006×1920	872×1028×1945.5	872×1060×1994.5	1170×1060×1994.5	1240×1000×2000	854×1072×1907	854×1072×1907		872×940×1945.5	872×1100×1994.5	1354×1072×1907	1248×970×1994	1160×1085×1994.5	872×940×1945.5	872×1100×1994.5	1160×1085×1994.5	680×580×935	1695×840×962	
	Interior size(W*D*H)(mm)	361×429×406	465×465×830	488×600×1140	606×575×1180	606×738×1310	894×718×1310	1000×700×1335	488×607×1140	488×607×1140		606×575×1180	606×738×1310	990×607×1140	963×558×1350	894×718×1310	606×575×1180	606×738×1310	894×718×1310	480×380×665	1455.5×525.2×674	
Package size(W*D*H)(mm)	655×755×1283	880×920×1830	935×1070×2135	954×955×2094	970×1140×2190	1265×1105×2210	1350×1135×2140	937×1075×2135	937×1075×2135		950×960×2110	970×1140×2190	1475×1090×2145	1320×975×2185	1280×1120×2210	950×960×2110	970×1140×2190	1280×1120×2210	770×705×1090	1765×900×1060		
Frozen Racks	Racks		9(4X3)	12(4X4)	16(5X4, 4X4)	16(5X5)	24(5X5)	24(5X5)	12(4X4)	12(4X4)		16(5X4, 4X4)	16(5X5)	24(4X4)	18(5X4)+6(6X4)	24(5X5)	16(5X4, 4X4)	16(5X5)	24(5X5)	4(11X1, 6X1)	30(11X1, 6X1)	
	Boxes (2 Inches)		108	192	288	400	600	600	192	192		288	400	384	504	600	288	400	600	34	30	
	Samples(2ml)		10800	19200	28800	40000	60000	60000	19200	19200		28800	40000	38400	50400	60000	28800	40000	60000	3400	30000	
Alarm	High/Low temperature	Y	Y	Y	Y	Y	Y	Y	Y	Y		Y	Y	Y	Y	Y	Y	Y	Y	Y	Y	
	Power failure	/	/	Y	Y	Y	Y	Y	Y	Y		Y	Y	Y	Y	Y	Y	Y	Y	/	/	
	Abnormal voltage	/	/	Y	Y	Y	Y	Y	Y	Y		Y	Y	Y	Y	Y	Y	Y	Y	/	/	
	Sensor error	Y	Y	Y	Y	Y	Y	Y	Y	Y		Y	Y	Y	Y	Y	Y	Y	Y	Y	Y	
	Filter screen check	/	/	Y	Y	Y	Y	Y	Y	Y		Y	Y	Y	Y	Y	Y	Y	Y	/	/	
	Thermostat failure	Y	Y	Y	Y	Y	Y	Y	Y	Y		Y	Y	Y	Y	Y	Y	Y	Y	Y	Y	
	Low battery	/	/	Y	Y	Y	Y	Y	Y	Y		Y	Y	Y	Y	Y	Y	Y	Y	/	/	
	Condenser clean	/	/	Y	Y	Y	Y	Y	Y	Y		Y	Y	Y	Y	Y	Y	Y	Y	/	/	
	High ambient temperature	/	/	Y	Y	Y	Y	Y	Y	Y		Y	Y	Y	Y	Y	Y	Y	Y	/	/	
	Door ajar	/	/	Y	Y	Y	Y	Y	Y	Y		Y	Y	Y	Y	Y	Y	Y	Y	/	/	
	Castor	Y	Y	Y	Y	Y	Y	Y	Y	Y		Y	Y	Y	Y	Y	Y	Y	Y	Y	Y	
	Inside door	1	3	2	2	2	2	4	2	2		2	2	2	2	2	2	2	2	/	/	
	Test hole QTY/diameter	/	1/25MM	1/25MM	1/25MM	1/25MM	1/25MM	1/25MM	1/18MM	2/25MM	2/25MM		1/25MM	1/25MM	2/25MM	1/25MM	1/25MM	1/25MM	1/25MM	1/25MM	1/25MM	
	USB port	/	/	Y	Y	Y	Y	Y	Y	Y		Y	Y	Y	Y	Y	Y	Y	Y	/	/	
	Chart recorder	/	/	/	/	/	/	/	Optional	Optional		Optional	Optional	Optional	Optional	Optional	Optional	/	/	Optional	Optional	
	Data logger	Optional	Optional	Optional	Optional	Optional	Optional	Optional	Optional	Optional		Optional	Optional	Optional	Optional	Optional	Optional	Optional	Optional	Optional	Optional	Optional
Power failure backup system(alarm)	/	72h	72h	72h	72h	72h	72h	72h	72h		72h	72h	72h	72h	72h	72h	72h	72h	72h	/	/	
Remote alarm port	/	/	Y	Y	Y	Y	Y	Y	Y		Y	Y	Y	Y	Y	Y	Y	Y	Y	/	/	
CO2 back up system	Optional	Optional	Optional	Optional	Optional	Optional	Optional	Optional	Optional		Optional	Optional	Optional	Optional	Optional	Optional	Optional	Optional	Optional	Optional	Optional	
LN2 back up system	Optional	Optional	Optional	Optional	Optional	Optional	Optional	Optional	Optional		Optional	Optional	Optional	Optional	Optional	Optional	Optional	Optional	Optional	Optional	Optional	
Certification	Certification	ISO, CE	ISO, CE	ISO, CE	ISO, CE	ISO, CE	ISO, CE	ISO, CE	ISO, CE	ISO, CE		ISO, CE	ISO, CE	ISO, CE	ISO, CE	ISO, CE	ISO, CE	ISO, CE	ISO, CE	ISO, CE	ISO, CE	

PROMED

—Medical Freezer



-40°C Medical Freezer



MDF-40V50



MDF-40V328E



MDF-40V268E



MDF-40V278W



KEY FEATURES

- Microprocessor control, adjustable temperature range: 20°C to -40°C
- LED digital display and increment at 0.1°C
- Permanently lubricated cooling fan for safety and longevity.
- Independent inner door to avoid more cooling leaking out, and provide more stable inside temperature performance
- High density CFC-Free urethane foam insulation.



ERGONOMIC DESIGN

- USB data logging and temperature recorder (optional).
- Build-in lock with safety and beauty
- Lockable caster design for customer to move as needed



RELIABILITY

- Chemically stable, CFC-free, commercially available and environmentally safe refrigerant.
- Optimized refrigeration system designed to maximize cooling effect and temperature uniformity
- Microprocessor control, digital display, adjustable temperature range: -20°C--40°C
- LED digital display for clear observation,



SAFETY

- Multiple malfunction alarms to detect high and low temperature, sensor error, power off, temperature controller malfunction, door ajar.
- Two types of alarm indications: audible buzzing and visual flashing light.
- Corrosion proof cabinet interior design
- Power failure protect: the device would be attack by the high current when all devices restart simultaneously, the start-delay function would protect device from the damage



ELECTRIC CONTROL

- Wide voltage tolerance design with applicable voltage range of 187-242V/AC

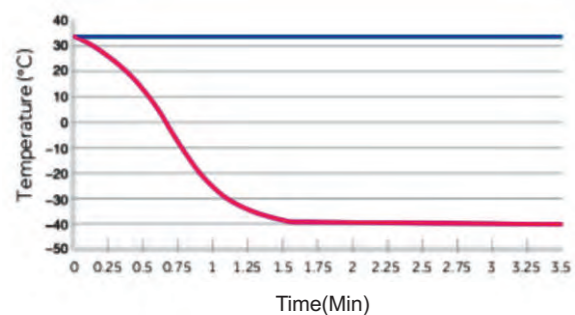
This product is designed to store vaccines, blood plasma, and many other biological materials. installations can be found in researching institutions and clinical sites in life science, electronic testing and medical markets.



-40°C Medical Freezer



MDF-40V278W



Pull-down test at 32°C ambient



-40°C Medical Chest Freezer



MDF-40H485



MDF-40H105



KEY FEATURES

- Chemically stable, CFC -free, commercially available and environmentally safe refrigerant.
- Microprocessor control, adjustable temperature range: -20°C to -40°C
- LED digital display and increment at 0.1°C
- Permanently lubricated cooling fan for safety and longevity .
- Wide voltage band for 187V~242V



CHARACTERISTIC FUNCTION

- Door lock design to avoid abnormal door open
- Big screen for easy observation
- Standard testing hole



SAFETY

- Multiple malfunction alarms to detect high and low temperature , sensor error, power failure, temperature controller malfunction
- Two types of alarm indications: audible buzzing and visual flashing light.



RELIABILITY

- HIGH DENSITY CFC-FREE URETHANE FOAM INSULATION.
- Standard with 25mm test hole
- Power failure protect: the device would be attack by the high current when all devices restart simultaneously, the start-delay function would protect device from the damage



STRUCTURAL DESIGN

- Wide voltage band for 187V~242V



MDF-40V528



MDF-40V528

-40°C Medical Freezer



Front-mounted display/control panel located at convenient height for easy access



Insulated door with gasket for sample protection and uniformity
Door frame 'Hot-line' and gasket design prevents ice build-up and reduces maintenance.



Equipped with separate doors that suppress the leakage of cold air during opening and closing of the doors, and manual defrosting that helps avoid temperature impact on the samples.



Top and bottom chambers are equipped with 2 independent refrigeration circuits that enables separate temperature settings and defrosting for the two chambers. With the capability to defrost the top and bottom chambers separately, the unit makes it easy to transfer samples during defrosting.



Big condenser for better heat dissipation, Ambient Temperature



RELIABILITY

- Single temperature control system with double door construction.
- Flexible and easy storage by height-adjustable shelf trays
- Maintains the quality of the samples during preservation
- 2 completely independent chambers with their own temperature displays



KEY FEATURES

- Two-Door freezers are equipped with various specifications that enable flexibility and maintain the quality of the samples during preservation such as height-adjustable shelf trays.
- The separate top and bottom doors suppress cold air leakage and 2 completely independent chambers each has its own temperature control.



FEATURES

- Height-adjustable shelf trays allow you to adjust the inside of the chambers according to the size of the samples. By changing the height of the shelf trays, the unit can accommodate various sizes of samples including stored in your conventional models.
- Door latch with provision for a padlock for extra protection of samples.
- Equipped with separate doors that suppress the leakage of cold air during opening and closing of the doors, and manual defrosting that helps avoid temperature impact on the samples.



SAFETY DESIGN

- To securely preserve/manage the valuable samples, in addition to a standard-feature door lock, a hole in the latch allows a padlock to be attached.
- Security functions that help protect valuable samples with a temperature control capability that inhibits the change in temperature inside the chamber, and an alarm/security function that prevents errors, the unit maintains the quality of the preserved samples.
- Temperature recorder (optional)
- Front-mounted display/control panel located at convenient height for easy access
- Insulated door with gasket for sample protection and uniformity
- 2 USB port interface



EASY TO CLEAN

- Top and bottom chambers are equipped with 2 independent refrigeration circuits that enables separate temperature settings and defrosting for the two chambers.
- With the capability to defrost the top and bottom chambers separately, the unit makes it easy to transfer samples during defrosting.

-40 °C Deep Freezer



	Model	MDF-40V50	MDF-40V268E(F)	MDF-40V278W(B)	MDF-40V328E(F)	MDF-40V528	MDF-40V936	MDF-40H105(A)	MDF-40H485(C)
Specifications	Shelf/Drawer	Shelves	Shelves	Drawer	Shelves	Shelves	Shelves	N	N
	Cooling method	Direct cooling	Direct cooling	Direct cooling	Direct cooling	Direct cooling	Direct cooling	Direct cooling	Direct cooling
	Defrost	Manual	Manual	Manual	Manual	Manual	Manual	Manual	Manual
	Refrigerant	HFC	R290	R290	R290	R290	Mixed-gas	HC-R290	HC-R290
	Power consumption(kWh/24h)	3.5	4	1.5	4	6.7	14.5	1.65	3.45
	Noise (db)	50	48	50	48	55	50	50	55
	Ambient temperature (°C)	10~32°C	10~32°C	10~32°C	10~32°C	10~32°C	10~32°C	10~32°C	10~32°C
Temperature range (°C)	-10~40°C	-30~40°C	-30~40°C	-30~40°C	-20~40°C	-25~40°C	-10~40°C	-10~40°C	
Cooling system	Compressor brand QTY	SECOP/1	CUBIGEL/1	CUBIGEL/1	CUBIGEL/1	Secop/1	Secop/2	CUBIGEL/1	CUBIGEL/1
	Condenser	Finned	Wire tube	Inside foaming	Wire tube	Copper tube	Copper tube and finned	Wire tube	Wire tube
	Sensor	NTC	NTC	NTC	NTC	NTC	PTC	NTC	NTC
	Temperature controller	Microprocessor	Microprocessor	Microprocessor	Microprocessor	Microprocessor	Microprocessor	Microprocessor	Microprocessor
Power	Display	Digital display	Digital display	Digital display	Digital display	Digital display	Digital display	Digital display	Digital display
	Voltage/Frequency (V/Hz)	220/50Hz	220/50Hz	220/50Hz	220/50Hz	220/50Hz	220/50Hz	220/50Hz	220/50Hz
	Power (W)	250W	300W	185W	300W	345W	1000W	120W	295W
Material	Current (A)	2.5	1.6	1.5A	1.6	2.9	5.8	1.05	2.45
	Inside material	Stainless steel	Color sprayed steel	Color sprayed steel	Color sprayed steel	Color sprayed steel	Stainless steel	Stainless steel	Stainless steel
	Outside material	Color sprayed steel	Color sprayed steel	Color sprayed steel	Color sprayed steel	Color sprayed steel	Color sprayed steel	Color sprayed steel	Color sprayed steel
Size	Insulation	PURF	PURF	PURF	PURF	PURF	PURF	PURF	PURF
	Capacity (L/cu.ft)	50\1.76	268\9.46	278\9.81	328\11.58	528\18.64	936\33.05	105\3.70	485\17.12
	NT.NGT. (kg)	75\95	98.5\115	110\120	113\131	160\180	310\330	62\70	124\138
	Exterior size(W*D*H)(mm)	540*620*1145	673*676*1630	659*600*1694	673*676*1886	900*818.5*1828	1304*1000*2017	680*580*935	1655*755*915
	Interior size(W*D*H)(mm)	361*429*406	508*455*1137	480*415*1460	508*455*1393	(651*631.5*635)*2	1000*700*1335	480*380*665	1455*525*665
Alarm	Package size(W*D*H)(mm)	690*760*1170	770*770*1804	710*650*1800	770*770*2040	997*912*1982	1350*1080*2150	740*680*970	1710*885*1020
	High/Low temperature	Y	Y	Y	Y	Y	Y	Y	Y
	Power failure	N	Y	N	Y	Y	Y	Y	Y
	Sensor error	Y	Y	Y	Y	Y	Y	Y	Y
	Filter screen check	N	N	N	N	N	Y	N	N
	Temperature controller failure	Y	Y	Y	Y	Y	Y	Y	Y
	Low battery	N	N	N	N	N	Y	N	N
	Condenser clean	N	N	N	N	N	Y	N	N
	High ambient temperature	N	N	N	N	N	Y	N	N
	Door ajar	N	Y	Y	Y	N	Y	N	N
Accessories	Foot	N	Y	N	Y	Y	N	Y	Y
	Castor	Y	Y	N	Y	Y	Y	Y	Y
	Inside door	Y	Y	7 Drawer	Y	9Drawer*2	Y	N	N
	Test hole QTY/diameter	Optional	Optional	N	Optional	2/25MM	1/18MM	1/25MM	Optional
	USB port	N	N	N	N	N	Y	N	N
	Power failure backup system(alarm)	N	8h	8h	8h	8h	72h	N	N
Other	Remote alarm port	N	Y	N	Y	Y	Y	N	N
	Certification	ISO9001, 13485, 14001,CE	ISO9001, 13485, 14001,CE	ISO9001, 13485, 14001,CE	ISO9001, 13485, 14001,CE	ISO9001, 13485, 14001,CE	ISO9001, 13485, 14001,CE	ISO9001, 13485, 14001,CE	ISO9001, 13485, 14001,CE

-25°C Medical Freezer

High-end professional controller with full function

Build-in temperature probe

Independent inner door to avoid more cooling leaking out, and provide more stable inside temperature performance

Wighuniversal casters, mobile more convenient

Directional casters

Pull down test at 25°C ambient

Time (H)	Temperature (°C)
0	25
0.39	20
0.78	15
1.17	10
1.56	5
1.95	0
2.34	-5
2.73	-10
3.12	-15
3.51	-20
3.90	-25

-25°C Medical Freezer



RELIABILITY

- Chemically stable, CFC-free, commercially available and environmentally safe refrigerant.
- High density CFC-Free urethane foam insulation for rigidity and stable storage temperature.
- Microprocessor control, digital display adjustable temperature range: -10C--25C.
- LED digital display for clear observation.



REFRIGERATION SYSTEM

- Applied with international brand compressor, condenser fan, coil evaporator, filament tube condenser. Unique refrigeration technology to make better stability and faster cooling speed



SAFETY

- Multiple malfunction alarms including high and low temperature, sensor error, power off, temperature controller malfunction, door ajar.
- Two types of alarm indications: audible buzzing and visible flashing light.
- Power failure protect: the device would be attack by the high current when all devices restart simultaneously, the start-delay function would protect device from the damage
- Controller password protect function to avoid change running parameter randomly



KEY FEATURES

- Independent inner door to avoid more cooling leaking out, and provide more stable inside temperature performance
- Upright side door with build-in handle for easy-opening; limit door hinge to prevent collision when door open
- Lockable caster design for customer to move as needed
- Wide voltage tolerance design with applicable voltage range of 187~242 V/AC.

-25°C Medical Freezer

Digital temperature control and display

Build-in lock with safety and beauty

Build-in handle for easy opening

Inner 7 drawers

MDF-25V278W

Pull down test at 25°C ambient

Time (H)	Temperature (°C)
0	25
0.39	20
0.78	15
1.17	10
1.56	5
1.95	0
2.34	-5
2.73	-10
3.12	-15
3.51	-20
3.90	-25

-25°C Medical Freezer



	Model	MDF-25V268E	MDF-25V278W	MDF-25V328E	MDF-25V936	MDF-25H105	MDF-25H485
Specifications	Shelf (drawer)	Shelves	Shelves	Shelves	Shelves	N	N
	Cooling method	Direct cooling	Direct cooling	Direct cooling	Direct cooling	Direct cooling	Direct cooling
	Defrost	Manual	Manual	Manual	Manual	Manual	Manual
	Refrigerant	R290	R290	R290	R404A	HC-R290	HC-R290
	Power consumption(kWhN24h)	3	1.5	3	10	1.65	3.45
	Noise (db)	46	46	46	50	50	55
Cooling system	Ambient etperatur(°C)	10~32°C	10~32°C	10~32°C	10~32°C	10~32°C	10~32°C
	Temperature range (°C)	-10~-25°C	-10~-25°C	-10~-25°C	-10~-25°C	-10~-25°C	-10~-25°C
	Compressor brandNQTY	CUBIGELN1	DONPERN1	CUBIGELN1	SecopN2	CUBIGELN1	CUBIGELN1
	Sensor	NTC	NTC	NTC	PTC	NTC	NTC
	Temperature controller	Microprocessor	Microprocessor	Microprocessor	Microprocessor	Microprocessor	Microprocessor
	Display	Digital display	Digital display	Digital display	Digital display	Digital display	Digital display
Power	Voitagenfrequency(VNHz)	220N50Hz	220N50Hz	220N50Hz	220N50Hz	220N50Hz	220N50Hz
	Power (W)	280W	180W	280W	1000W	120W	295W
	Current (A)	1.4	1.5	1.4	5.8	1.05	2.45
Material	Inside material	Color sprayed steel	Color sprayed steel	Color sprayed steel	Stainless steel	Stainless steel	Stainless steel
	Outside material	Color sprayed steel	Color sprayed steel	Color sprayed steel	Color sprayed steel	Color sprayed steel	Color sprayed steel
	Insulation	PURF	PURF	PURF	PURF	PURF	PURF
Size	Capacity (L(Ncu.ft)	268/9.46	278/9.81	328/11.58	936/33.05	105/3.70	485/17.12
	NT.IGT. (kg)	98.5/115	105/115	113/131	310/330	62/70	124/138
	Exterior size(W*D*H)(mm)	673*676*1630	659*600*1694	673*676*1886	1304*1000*2017	680*580*935	1655*755*915
	Interior size(W*D*H)(mm)	508*455*1137	480*415*1460	508*455*1393	1000*700*1335	480*380*665	1455*525*665
Package size(W*D*H)(mm)	770*770*1804	710*650*1800	770*770*2040	1350*1080*2150	740*680*970	1710*885*1020	
Alarm	High/low temperature	Y	Y	Y	Y	Y	Y
	Power off	Y	N	Y	Y	Y	Y
	Sensor malfunction	Y	Y	Y	Y	Y	Y
	Temperature controller malfunction	Y	Y	Y	Y	Y	Y
	Door ajar	Y	Y	Y	Y	N	N
Accessories	Caster	Y	N	Y	Y	Y	Y
	Test hole	Optional	N	Optional	1N18MM	1N25MM	Optional
	Remote alarm	Y	N	Y	Y	N	N
Other	Certification	ISO9001, 13485, 14001,CE	ISO9001, 13485, 14001,CE	ISO9001, 13485, 14001,CE	ISO9001, 13485, 14001,CE	ISO9001, 13485, 14001,CE	ISO9001, 13485, 14001,CE

PROMED SERIES

4°C Blood Bank Refrigerator



4°C Blood Bank Refrigerator



MBC-4V108



MBC-4V208



MBC-4V658



MBC-4V1008



PURPOSE

- Professional refrigerator to store blood, as well as medicines and bio products
- Suitable for blood banks, hospitals, CDCs



ERGONOMIC DESIGN

- Safety lock to prevent unauthorized access.
- Storage space designed for easy sorting of a variety of blood products.
- Caster design and interior light.



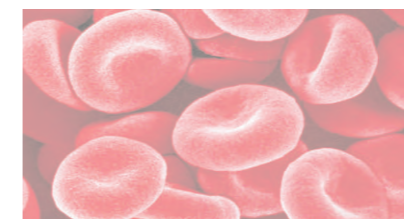
RELIABILITY AND KEY FEATURES

- Microprocessor controlled forced-air cooling with electrical heat compensation system.
- Digital temperature display for upper and lower sections in chamber with 0.1°C resolution.
- Consistent cabinet temperature 2-6°C
- High-tech integrated sensors to display and control temperature.
- Auto-defrost to remove moisture on cooling surface.
- Large digital display for ease of observation.



SAFETY

- Build-in backup battery to display temperature and to operate audible and visual alarm systems for up to 72 hours without ac power.
- Equipped with a complete temperature alarm system featuring audible buzzer and visible flashing light.
- Five alarm conditions : High/low temperature, power failure, voltage abnormal, door ajar, backup battery
- Standard with laser printer
- Standard with acrylic inner small door, for less affection on other room when one door open.



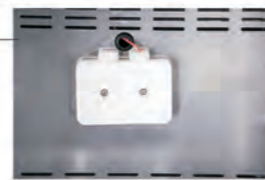
4°C Blood Bank Refrigerator



Forced air cooling system keep inside temperature stable and uniform



Individual transparent inner door can be opened independently to minimize loss of cold temperature during a door opening

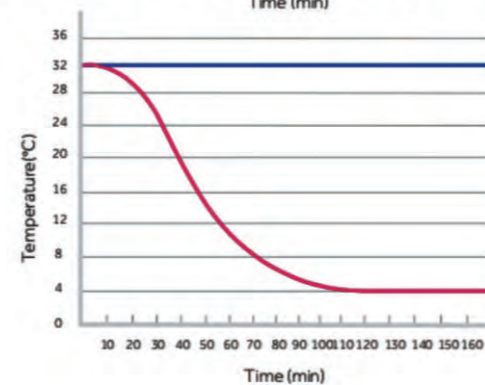
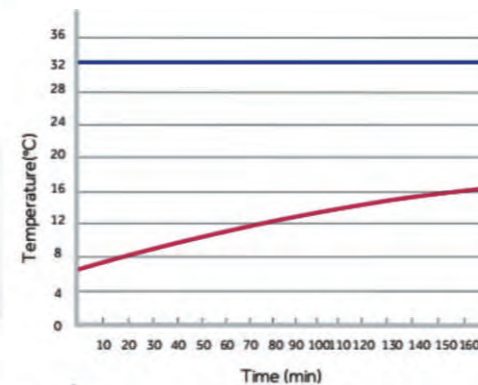


Exclusive patented temperature box design, reveal the real temperature of the blood in storage



Adjustable shelves, improve space utilization

Standard test hole



4°C Blood Bank Refrigerator



	Model	MBC-4V108	MBC-4V208	MBC-4V658	MBC-4V1008
Specifications	Shelf/drawer	Shelves/2	Shelves/4	Shelves/12	Drawers/12
	Cooling	Forced -air Cooling	Forced -air Cooling	Forced -air Cooling	Forced -air Cooling
	Defrost	Auto	Auto	Auto	Auto
	Refrigerant	R134a	R134a	R134a	R134a
	Power consumption(kWh/24h)	1.95	2.22	6.31	8.53
	Noise (db)	49.6dB(A)	51.2dB(A)	51.2 dB(A)	53.6 dB(A)
	Ambient temperature (°C)	10-32°C	10-32°C	10-32°C	10-32°C
Cooling system	Temperature range (°C)	4±1°C	4±1°C	4±1°C	4±1°C
	Compressor brand/QTY	Embraco/1	Embraco/1	Secop/1	Secop/1
	Sensor	NTC	NTC	NTC	NTC
	Temperature controller	Microprocessor	Microprocessor	Microprocessor	Microprocessor
Power	Display	Digital display	Digital display	Digital display	Digital display
	Voltage/frequency (V/Hz)	220/50Hz	220/50Hz	220/50Hz	220/50Hz
	Power (W)	160	200	364	513
Material	Current (A)	0.6	0.8	2.42	2.37
	Inside material	Stainless steel	Stainless steel	Stainless steel	Stainless steel
	Outside material	Color sprayed steel	Color sprayed steel	Color sprayed steel	Color sprayed steel
Size	Insulation	PURF	PURF	PURF	PURF
	Capacity (L/cu.ft)	108/3.81	208/7.34	658/23.23	1008/35.59
	Bloodbags(450ml)	66	132	360	576
	NT./GT. (kg)	50/55	67/75	165/195	256/286
	Exterior size(W*D*H)(mm)	522*600*1050	522*600*1550	1220*648*1885	1220*878*1885
	Interior size(W*D*H)(mm)	432*462*478	432*462*978	1100*454*1325	1100*684*1325
	Package size(W*D*H)(mm)	572*685*1070	572*685*1570	1300*730*2080	1300*960*2080
Alarm	High/low temperature	Y	Y	Y	Y
	Power off	Y	Y	Y	Y
	Temperature controller malfunction	Y	Y	Y	Y
	Backup battery malfunction	Y	Y	Y	Y
	Ambient temperature	10-32°C	10-32°C	10-32°C	10-32°C
Accessories	Backup battery Alarm for power off	72h	72h	72h	72h
	Caster	Y	Y	Y	Y
	Outer door/Type	1/Heating & Foam glass door	1/Heating & Foam glass door	2/Heating & Foam glass door	2/Heating & Foam glass door
	Inner door	2	4	6	6
Other	Test hole	1/25MM	1/25MM	1/25MM	1/25MM
	Thermal Printer	Y	Y	Y	Y
	Light	LED	LED	LED	LED
Other	Temperature recorder	Optional	Optional	Optional	Optional
	Qualifications	ISO9001,ISO13485,ISO14001	ISO9001,ISO13485,ISO14001	ISO9001,ISO13485,ISO14001	ISO9001,ISO13485,ISO14001

METHER SERIES

2°C~8°C Pharmacy Refrigerator



The pharmacy refrigerators are suitable for installation in drug stores, pharmaceutical companies, hospitals, epidemic prevention centers and clinics.

2~8°C Mether Pharmacy Refrigerator



MPC-5V406



MPC-5V306



RELIABILITY

- Accurate temperature control technology to make the temperature maintain 2~8°C and increment at 0.1°C.
- Improved user interface with additional features include data USB port which can storage ten years data.
- Oversized air-cooled condenser improves the robustness of the refrigeration system reliability and refrigeration efficiency. temperature variation within $\pm 3^{\circ}\text{C}$
- Microprocessor control, digital display, designed for ambient temperature 10~32°C with humidity below 60%.



SAFETY

- Equipped with a complete temperature alarm system featuring
- Audible buzzer and visible flashing light
- Capable of alerting failures due to high and low temperature sensor error, door ajar, power failure and low battery, voltage abnormal, controller malfunction, condenser filter dirty, high ambient temperature



FEATURES

- Forced-air cooling with optimized air distribution system designed
- To achieve maximum temperature uniformity and stability
- Optimized refrigeration system design form ore effective cooling and
- Speedy recovery



ERGONOMIC DESIGN

- Optimized space design with multi-level and adjustable shelf to accommodate storage requirement of various kinds of pharmaceutical products.
- Safety lock to prevent unauthorized access
- Caster design and leveling legs
- LED Interior light



METHER 2°C~8°C Pharmacy Refrigerator

2°C~8°C Methers- Pharmacy Refrigerator



Forced-air cooling with optimized air distribution system designed to achieve maximum temperature uniformity and stability.



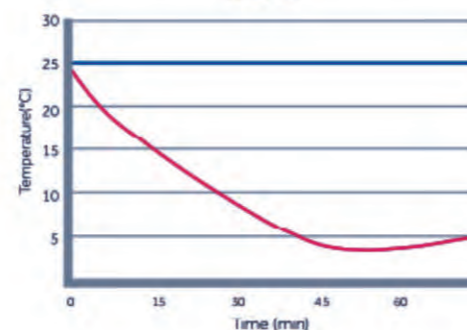
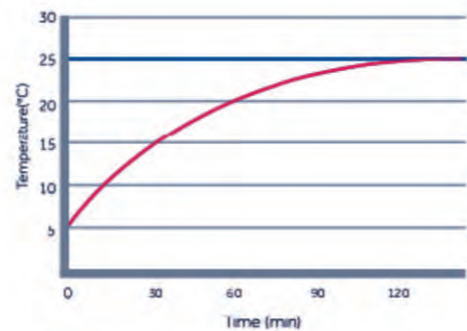
Microprocessor control, digital display, temperature uniformity within 3 degree. Malfunction alarms include high/low temperature, door ajar, sensor error, power failure, low battery, remote alarm interface.



LED interior light saves energy and provides bright lighting for viewing. Shelves with label holders meet demands of product archiving and retrieving.

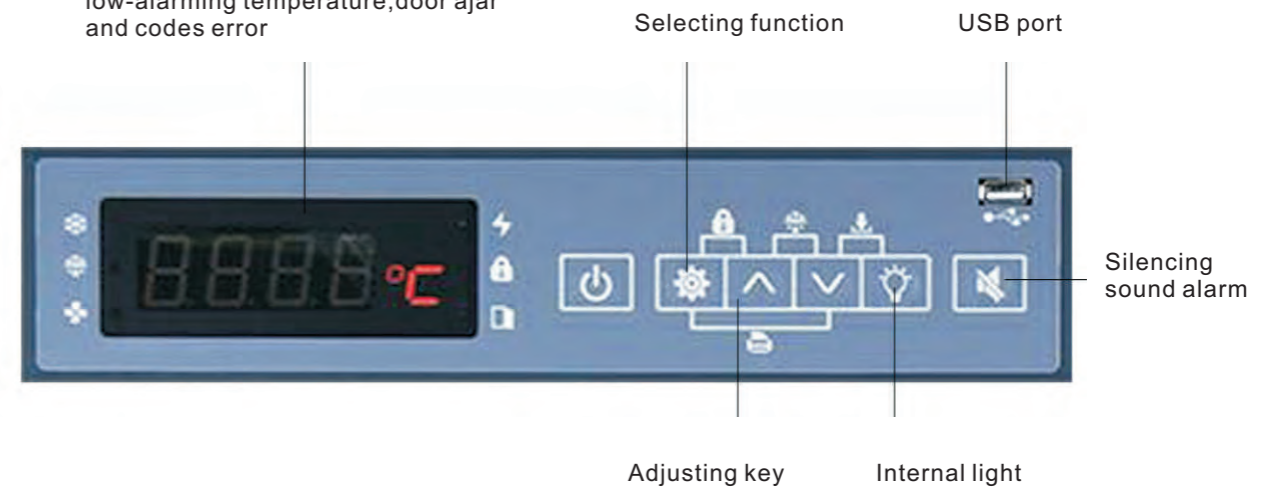


Heated double-pane glass door allows a clear display of stored products without condensation at 32 degree and 85 degree relative humidity condition.



2°C~8°C Methers- Pharmacy Refrigerator

Display for working temperature, setting temperature, high-alarming temperature, low-alarming temperature, door ajar and codes error



Alarm	Alarm Triggering Condition
High Temperature	Temperature reaches the warm alarm limit
Low Temperature	Temperature reaches the low alarm limit
Power Failure	Equipment loses power
Door Ajar	Door open audible and visual alarm
Probe Failure	1. Main cabinet temperature control sensor fails 2. Sensor fails
Low Battery	Battery capacity runs low or battery switch is not turned on



MPC-5V406



MPC-5V306



PROMED SERIES

2~8°C Pharmacy refrigerator



The pharmacy refrigerators are suitable for installation in drug stores, pharmaceutical companies, hospitals, epidemic prevention centers and clinics.

2~8°C Pharmacy Refrigerator



MPC-5V60G

MPC-5V316

MPC-5V656

MPC-5V1006



ERGONOMIC DESIGN

- Optimized space utilization design with multi-level and adjustable shelf height to accommodate storage requirement of pharmaceutical products of various kinds.
- Safety lock to prevent unauthorized access
- Caster design and leveling legs
- LED Interior light.



FORCED AIR-COOLING SYSTEM

- Advanced forced cooling system to keep inside temperature stable and uniform. Finned evaporator with special cycle design of forced air cooling system to assure no-frost inside



CHARACTERISTIC FUNCTION

- Safety door lock design to avoid door ajar
- Big digital screen display for easy observation
- Optional testing hole
- Adjustable shelves
- Inner light design for a clear display



RELIABILITY AND KEY FEATURES

- High efficiency specialty compressor with known field reliability.
- Permanently lubricated cooling fan for safety and longevity.
- Forced-air cooling with optimized air distribution system designed.
- To achieve maximum temperature uniformity and stability.
- Optimized refrigeration system design for more effective cooling and Speedy recovery.
- Temperature variation within $\pm 3^{\circ}\text{C}$
- Adjustable temperature range $2\text{--}8^{\circ}\text{C}$
- Microprocessor control, digital display, and temperature adjustment with an increment of 0.1°C
- Large digital display screen.



SAFETY

- Equipped with a complete temperature alarm system featuring audible buzzer and visible flashing light.
- Capable of alerting failures due to high and low temperature sensor error, door ajar, power failure and low battery.

2°C~8°C Pharmacy Refrigerator



Equipped with a complete temperature alarm system featuring audible buzzer and visible flashing light Capable of alerting failures due to high and low temperature sensor error, door ajar, power failure and low battery



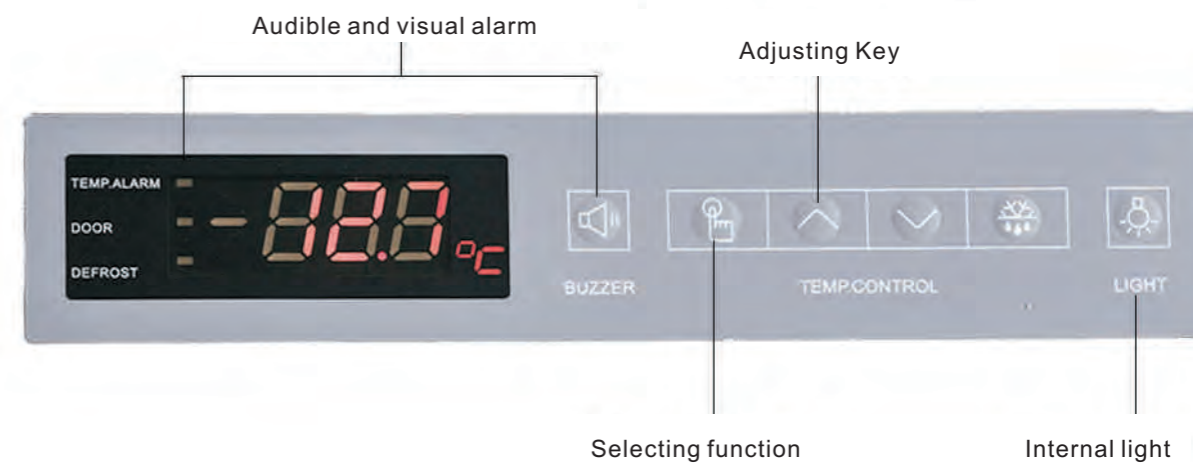
Forced- air cooling with optimized air distribution system designed To achieve maximum temperature uniformity and stability Optimized refrigeration system design for more effective cooling and Speedy recovery



Test Hole- For monitor sensor or temperature test, optional

Optimized space utilization design with multi - level and adjustable shelf height to accommodate storage requirement of pharmaceutical products of various kinds. Safety lock to prevent unauthorized access.Caster design and leveling legs LED Interior light

2°C~8°C Pharmacy Refrigerator



Alarm	Alarm Triggering Condition
High Temperature	Temperature reaches the warm alarm limit
Low Temperature	Temperature reaches the low alarm limit
Power Failure	Equipment loses power
Door Ajar	Door open audible and visual alarm



MPC-5V416



MPC-5V656



MPC-5V60G

+2~8 °C Pharmacy Refrigerator



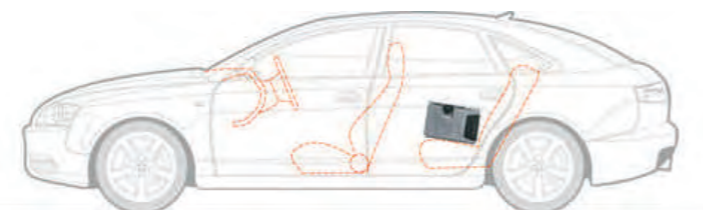
	Model	MPC-5V60G	MPC-5V130	MPC-5V236	MPC-5V316	MPC-5V306		MPC-5V406	MPC-5V416	MPC-5V656	MPC-5V1006	MPC-5V1500
Specifications	Shelf/drawer	Shelves/2	Shelves/3	Shelves/4	Shelves/5	Shelves/4/Basket*1		Shelves*4/Basket*1	Shelves/5	Shelves/10	Shelves/10	Shelves/12
	Cooling method	Forced Air Cooling System	Forced Air Cooling System	Forced Air Cooling System	Forced Air Cooling System	Forced Air Cooling System		Forced Air Cooling System	Forced Air Cooling System	Forced Air Cooling System	Forced Air Cooling System	Forced Air Cooling System
	Defrost	Auto	Auto	Auto	Auto	Auto		Auto	Auto	Auto	Auto	Auto
	Refrigerant	R600a	R600a	R134a	R600a	R134a		R134a	R600a	R600a	R600a	R134a
	Power consumption(kWh/24h)	1.2	1.65	2.56	1.64	1.91		2.66	2.37	5.75	6.23	8
	Noise (db)	50		46	50	50		50	50	52	53	55
	Ambient temperature (°C)	10~32°C	10~32°C	10~32°C	10~32°C	10~32°C		10~32°C	10~32°C	10~32°C	10~32°C	10~32°C
Temperature range (°C)	2~8°C	2~8°C	2~8°C	2~8°C	2~8°C		2~8°C	2~8°C	2~8°C	2~8°C	2~8°C	2~8°C
Sensor Type	NTC	NTC	NTC	NTC	NTC		NTC	NTC	NTC	NTC	NTC	NTC
Temperature controller	Microprocessor	Microprocessor	Microprocessor	Microprocessor	Microprocessor		Microprocessor	Microprocessor	Microprocessor	Microprocessor	Microprocessor	Microprocessor
Display	Digital display	Digital display	Digital display	Digital display	Digital display		Digital display	Digital display	Digital display	Digital display	Digital display	Digital display
Power	Voltage/frequency (V/Hz)	220/50Hz	220/50Hz	220/50Hz	220/50Hz	220/50Hz		220/50Hz	220/50Hz	220/50Hz	220/50Hz	220/50Hz
	Power (W)	87W	150W	254W	226W	220W		230W	175W	310	310W	1110W
	Current (A)	0.62A	0.8	1.15	1.03	1.15		1.18	1.26A	1.7	1.75	3.8
Size	Capacity (L/cu.ft)	60/2.11	130/4.59	236/8.33	316/11.15	306/10.80		406/14.33	416/14.69	656/23.16	1006/35.52	1500/52.97
	NT./GT. (kg)	22/24	53/57	63/65	92.5/100	95/110		115/128	120/133	158/188	207/237	170/190
	Exterior size(W*D*H)(mm)	480X450X535	500×503×1292	580×560×1785	640×582×1880	640×580×1920		780×580×1920	780×580×1920	1220×642×1885	1220×872×1885	1800×775×1965
	Interior size(W*D*H)(mm)	400X415X447	418×390×761	500×420×1090	540×425×1380	540×425×1380		685×425×1380	685×429×1380	1100×454×1325	1100×684×1325	/
Package size(W*D*H)(mm)	555X505X610	575×580×1365	730×675×1915	710×655×1960	740×655×2040		875×650×2065	880×640×2100	1335×715×2050	1330×940×1970	1910×855×2155	
Alarm	High/low temperature	Y	Y	Y	Y	Y		Y	Y	Y	Y	Y
	Power failure	Y	Y	Y	Y	Y		Y	Y	Y	Y	Y
	Thermostat failure	Y	Y	Y	Y	Y		Y	Y	Y	Y	Y
	Door ajar	Y	Y	Y	Y	Y		Y	Y	Y	Y	Y
Accessories	Foot	Y	Y	Y	Y	Y		Y	Y	/	/	/
	Castor	/	/	Y	Y	Y		Y	Y	Y	Y	Y
	Outer door/Type	1/Glass/Low-E	1/Glass door	1/Glass door	1/Glass /Low-E	1/Heating glass door with automatic rebound		1/Heating glass door with automatic rebound	1/Glass /Low-E	2/Heating glass door with automatic rebound	2/Heating glass door with automatic rebound	1/Glass door
	Door Lock	1	1	1	1	1		1	1	2	2	3
	Test hole QTY/diameter	1/25mm	Optional	Optional	1/25mm	1/25mm		1/25mm	1/25mm	1/25mm	1/25mm	Optional
	Lamp	LED	LED	LED	LED	LED		LED	LED	LED	LED	LED
	USB port	Optional	Optional	Optional	Optional	Y		Y	Optional	Optional	Optional	/
	Temperature recorder	Optional	Optional	Optional	Optional	Optional		Optional	Optional	Optional	Optional	Optional
	Power failure backup system(alarm)	8h	8h	8h	8h	72h		72h	8h	8h	8h	8h
	Remote alarm port	Optional	Optional	Optional	Optional	Optional		Optional	Optional	Optional	Optional	Optional
RS232/485 port	Optional	Optional	Optional	Optional	Optional		Optional	Optional	Optional	Optional	Optional	
Others	Certification	ISO9001/13485/14 001;CE	ISO9001/13485/14 001;CE	ISO9001/13485/14 001;CE	ISO9001/13485/14 001;CE	ISO9001/13485/14 001;CE		ISO9001/13485/14 001;CE	ISO9001/13485/14 001;CE	ISO9001/13485/14 001;CE	ISO9001/13485/14 001;CE	ISO9001, 13485, 14 001, CE

METHER SERIES

-25°C~30°C Medical Freezer- Mobile Cooler



To transport and transfer blood, plasma, vaccine, reagents and special medicines in medical and logistics industry.



-25~30°C
Mether
Mobile Cooler



MDF-25H30LC



MDF-25H80LC



MBC-4V700LC
(only for blood transport)



PURPOSE

- To store and transport blood, serum, plasma, vaccine, reagents and special medicines in medical industry. Also used as medicines pass box for epidemic prevention station, blood bank, health center, CDC, animal husbandry bureau, army and logistics service, express company, pharmaceutical factory, genetic engineering.



USER FRIENDLY DESIGN

- The whole roll structure prevents collision damage.
- Multilayer stacking.



SECURITY GUARANTEE

- Functional alarm system with audible and visible
- Remote control
- Constantly alarm after power off
- Keyboard lockable



FEATURES

- Multiple voltage used as AC220V or DC12V/24V, (Only for blood transportation) power supply of cigarette lighter
- Whole roll PE structure
- Combined with forced air cooling system and direct cooling system
- Multi-function: 3 ranges of inner temperature:
 - 2°C ~8 °C used as pharmacy refrigerator
 - 10°C ~ -25 °C used as deep freezer
 - 22 ± 2°C used as incubator

METHER -25°C~30°C Mobile Cooler

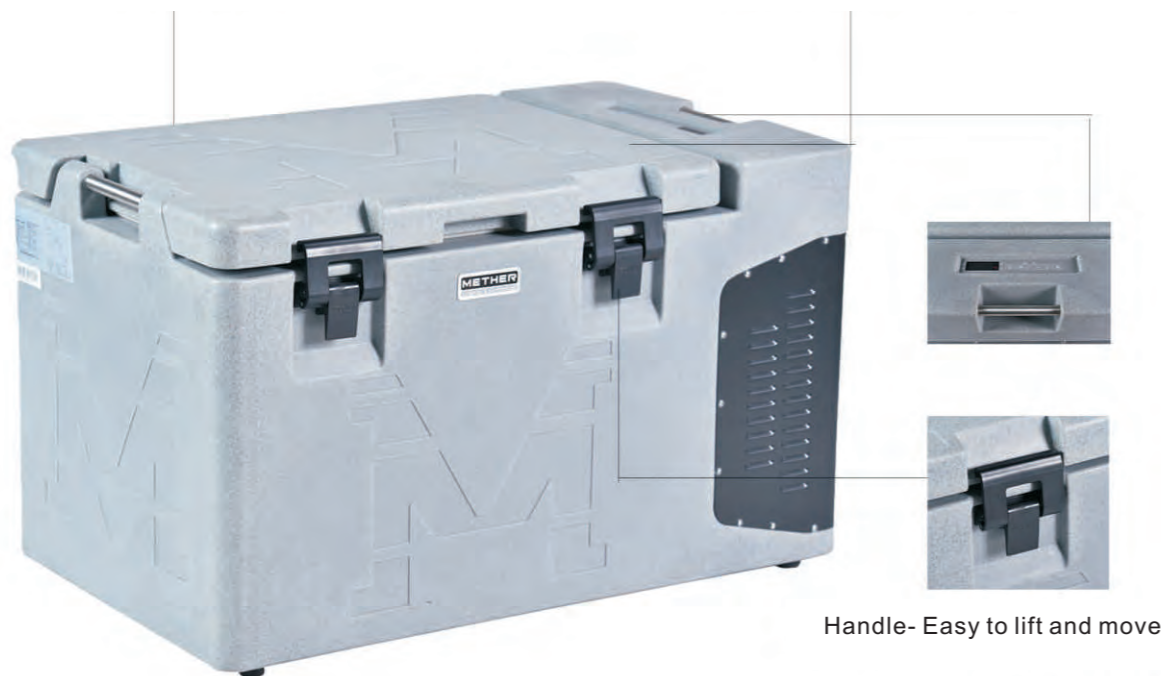
-25°C~30°C Medical Freezer- Mobile Cooler



Multilayer stacking



Whole roll PE structure



Handle- Easy to lift and move



Power supply of cigarette lighter



Mobile Cooler



	Model	MDF-25H30LC	MDF-25H80LC	MBC-4V700LC
Specifications	shelves/basket	Basket around Evaporator	Basket around Evaporator	Blood Baskets
	Cooling method	Forced Air Cooling	Forced Air Cooling	Forced -air Cooling
	Defrost	Manual	Manual	No Frost with heated glass door
	Refrigerant	R134a	R134a	R134a
	Power consumption(kWh/24h)	1.2	1.6	1.6
	Noise (db)	45	46	50
	Ambient temperature (°C)	10~32°C	10~32°C	10~32°C
	Temperature range (°C)	-25/4/22	-25/4/22	4°C/22°C
	Sensor	NTC	NTC	NTC
	Temperature controller	Microprocessor	Microprocessor	Microprocessor
Display	Digital display	Digital display	Digital display	
Power	Voltage/frequency (V/Hz)	220/50Hz、DC12V/24V	220/50Hz、DC12V/24V	DC12V、DC24V、AC220V
	Power (W)	80W	100W	160W
	Current (A)	DC 6.5A	Adc 8A	DC12V/14A、DC24V/7A、AC220V/1.5A
Material	Inside material	PE	PE	PE
	Outside material	PE	PE	PE
	Insulation	PURF	PURF	PURF
Size	Capacity (L/cu.ft)	30\1.059	80\2.825	700\24.72
	NT./GT. (kg)	22/26	47/55	162/185
	Exterior size(W*D*H)(mm)	615*370*471.5	937*565*580.5	1090*1129.5*1080
	Interior size(W*D*H)(mm)	364*253*352.5	547*378*369.5	939*973*863
Package size(W*D*H)(mm)	690*430*540	990*630*630	1140*1190*1150	
Alarm	High/low temperature	Y	Y	Y
	Power failure	Y	Y	Y
	Sensor error	Y	Y	Y
	Thermostat failure	Y	Y	Y
Accessories	Foot	/	/	PE Foot
	Temperature recorder	Optional	Optional	Optional
	Power failure backup system(alarm)	8h	8h	8h
	Remote alarm port	Optional	Optional	/
Others	Certification	9001, 13485, 14001	9001, 13485, 14001	9001, 13485, 14001, CE

PROMED SERIES

— Blood Platelet Incubator — Shaking



Blood Platelet Incubator



MDC-10



MDC-5



BOX

- SUS oscillator, mirror surface SUS shelves, box foamed with high density non-CFC material, reasonable design of air duct in the cabinet, axial flow fan makes inner temperature more uniformity with accurate temperature control



SAFETY SYSTEM

- Imported oscillation slide rail for longevity and low noise
- High/low temperature alarm, sensor error alarm, power failure alarm for 72hours, low battery alarm, door ajar alarm
- Two alarm styles: audible buzzing and visual flashing light
- Power cord with earth leakage protection



CHARACTERISTIC FUNCTION

- Disinfection with UV, set disinfection time freely, UV light would be off while door open, to protect human body
- Temperature printer can be set as needed
- Wide voltage from 187V~ 242V
- Power on/off switch, more convenient for operation
- Double transparent insulated glass door for easy observation
- Big digital display for easy observation



PURPOSE

- To store blood platelet (20°C~24°C), biological reagent (2°C~40°C), chemical products stored at (2°C~40°C)
- Suitable for hospitals, blood stations, research institutes and university labs



TEMPERATURE CONTROL MODE

- High accuracy sensor
- Microprocessor temperature control, inner temperature controlled in 22°C ± 2°C
- Intelligent controlled fan with forced cycle system to ensure inner temperature more uniform



REFRIGERATION SYSTEM

- Branded condenser fan
- Branded compressor with CFC-free refrigerant
- High efficiency refrigeration system, fast cooling speed and uniformity temperature inside
- Branded evaporator for safety and longevity
- Finned evaporator to speed up the cooling process

Blood Platelet Incubator



Platelet Incubator



	Model	MDC-5	MDC-10
Specifications	Shelf/drawer QTY	Drawer	Drawer
	Cooling method	Forced air cooling	Forced air cooling
	Defrost	No frost	No frost
	Refrigerant	R134a	R134a
	Power consumption(kWh/24h)	2.69	4.4
	Noise (db)	49	50
	Ambient temperature (°C)	10~32°C	10~32°C
Cooling system	Temperature range (°C)	20~24°C	20~24°C
	Compressor brand/QTY	Embraco/1	Embraco/1
	Sensor	NTC	NTC
Power	Temperature controller	Microprocessor	Microprocessor
	Display	Digital display	Digital display
	Voltage/frequency (V/Hz)	220/50Hz	220/50Hz
Material	Power (W)	197W	280W
	Current (A)	0.9	1.27
	Inside material	SUS	SUS
Size	Outside material	Colored Spray Steel	Colored Spray Steel
	Insulation	PU	PU
	Capacity (L/cu.ft)	5	10
	Bloodbags(450ml)/Drawer	10 /5 layers	20 /10 layers
	NT./GT. (kg)	60/65	80/86
Alarm System	Exterior size(W*D*H)(mm)	522×600×1050	522×600×1300
	Interior size(W*D*H)(mm)	427×360×467	432×462×728
	Package size(W*D*H)(mm)	585*700*1205	588*677*1440
	High/low temperature	Y	Y
	Power failure	Y	Y
	Sensor malfunction	Y	Y
	Low battery	Y	Y
Others	Door ajar	Y	Y
	Caster	Y	Y
	Outer door / Type	1 (Foamed glass door)	1 (Foamed glass door)
	Test hole	Optional	Optional
	Light	UV Light	UV Light
	Temperature recorder	Optional	Optional
	Certification	ISO,9001, 13485, 14001,CE	ISO,9001, 13485, 14001,CE



MDF-86V838D MDF-86V588D MDF-86V408D MDF-86V838 MDF-86V728 MDF-86V588 MDF-86V408 MPC-5V406 MPC-5V306 MDF-25H80LC MDF-25H30LC MBC-4V700LC



MDF-86V838E MDF-86V588E MDF-86V340E MDF-86V188E MPC-86V50 MDF-86V936 MDF-86V688 MDF-86V340II



MDF-86H485 MDF-86H105 MDF-60H485 MDF-60H105 MDF-40V328E MDF-40V268E MDF-40V278W MDF-40V528 MDF-25V328E MDF-25V268E



MDF-25V278W MDF-40H485 MDF-40H105 MPC-5V1006 MPC-5V656 MPC-5V416 MPC-5V316 MPC-5V236 MPC-5V130 MPC-5V60G MBC-4V1008



MBC-4V658 MBC-4V208 MBC-4V108 MDC-10 MDC-5

Model	Volume	Exterior dimensions (W*D*H/mm)	Interior dimensions (W*D*H/mm)	Net Weight/kg	Power/W	Temp Range/°C
MDF-86V838D	838L	1160*1135*1994.5	894*718*1310	275kg	1475W	-40°C~-86°C
MDF-86V588D	588L	872*1155*1994.5	606*738*1310	249kg	1250W	-40°C~-86°C
MDF-86V838	838L	1160*1172*1994.5	894*718*1310	275kg	890W	-60°C~-86°C
MDF-86V728	728L	1248*970*1994	963*558*1350	275kg	890W	-60°C~-86°C
MDF-86V588	588L	872*1192*1994.5	606*738*1310	249kg	815W	-60°C~-86°C
MDF-86V408	408L	872*1028*1945.5	606*575*1180	215kg	845W	-60°C~-86°C

Model	Volume	Exterior dimensions (W*D*H/mm)	Interior dimensions (W*D*H/mm)	Net Weight/kg	Power/W	Temp Range/°C
MPC-5V60G	60	480*450*535	400*415*447	22kg	87W	2°C ~8°C
MPC-5V406	406L	780*580*1920	685*425*1380	115kg	230W	2°C~8°C
MPC-5V306	306L	640*580*1920	540*425*1380	95kg	220W	2°C~8°C
MDF-25H80LC	80L	937*565*580.5	547*378*369.5	47kg	100W	30±1/4±1/-25±1
MDF-25H30LC	30L	615*370*471.5	364*253*352.5	22kg	80W	30±1/4±1/-25±1
MDF-86V838E	838L	1160*1172*1994.5	894*718*1310	275kg	890W	-40°C~-86°C
MDF-86V588E	588L	872*1192*1994.5	606*738*1310	249kg	800W	-40°C~-86°C
MDF-86V340E	340L	855*1006*1920	488*600*1140	175kg	668W	-40°C~-86°C
MDF-86V188E	188L	830*810*1607.5	465*465*830	150kg	610W	-40°C~-86°C
MDF-86V50	50L	615*668*1150	361*429*406	75kg	450W	-40°C~-86°C
MDF-86V936	936L	1304*1000*2017	1000*700*1335	310Kg	1600W	-40°C~-86°C
MDF-86V688	688L	1354*1072*1907	990*607*1140	260kg	808W	-40°C~-86°C
MDF-86V340II	340L	854*1072*1907	488*607*1140	190kg	1350W	-60°C~-86°C
MDF-86H485	485L	1655*755*915	1455*525*665	124kg	485W	-40°C~-86°C
MDF-86H105	105L	680*580*935	480*380*665	42kg	455W	-40°C~86°C
MDF-60V485	485L	1655*755*915	1455*525*665	124kg	485W	-25°C~-60°C
MDF-60H105	105L	680*580*935	480*380*665	62kg	280W	-25°C~60°C
MDF-40V528	528L	900*818.5*1828	651*631.5*635*2	160kg	87W	2°C ~8°C
MDF-40V328E	328L	673*676*1886	508*455*1393	113kg	300W	-30°C~-40°C
MDF-40V268E	268L	673*676*1630	508*455*1137	98.5kg	300W	-30°C~-40°C
MDF-40V278W	278L	659*600*1694	480*415*1460	110kg	185W	-10°C~-25/32°C
MDF-25V328E	328L	673*676*1886	508*455*1393	113kg	280W	-10°C~-25°C
MDF-25V268E	268L	673*676*1630	508*455*1137	98.5kg	280W	-10°C~-25°C
MDF-25V278W	278L	659*600*1694	480*415*1460	105kg	180W	-30°C~ 40°C
MDF-40H485	485L	1655*755*915	1455*525*665	124kg	295W	-10°C~40°C
MDF-40H105	105L	680*580*935	480*380*665	62kg	120W	-10°C~40°C
MPC-5V1006	1006L	1220*872*1885	1100*684*1325	207kg	310W	2°C ~8°C
MPC-5V656	656L	1220*642*1885	1100*454*1325	158kg	310W	2°C ~8°C
MPC-5V416	416L	780*580*1920	685*429*1380	120kg	175W	2°C ~8°C
MPC-5V316	316L	640*552*1880	540*425*1380	92.5kg	215W	2°C~8°C
MPC-5V236	236L	580*560*1785	500*420*1090	63kg	254W	2°C~8°C
MPC-5V130	130L	500*503*1292	418*390*761	53kg	150W	2°C~8°C
MBC-4V1008	576 bags	1220*878*1885	1100*684*1325	256kg	513W	4±1°C
MBC-4V658	360 bags	1220*648*1885	1100*454*1325	165kg	364W	4±1°C
MBC-4V700LC	700L	1090*1129.5*1080	939*973*863	162kg	160W	4°C/22°C
MBC-4V208	132 bags	522*600*1550	432*462*978	67kg	200W	4±1°C
MBC-4V108	66 bags	522*600*1050	432*462*478	50kg	160W	4±1°C
MDC-10	10 layers	522*600*1300	432*462*728	80kg	280W	20-24°C Adjustable
MDC-5	5 layers	522*600*1050	427*360*467	60kg	197W	20-24°C Adjustable